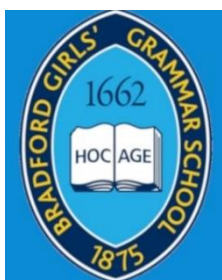

CHILD PROTECTION POLICY



ASPIRE • SUCCEED • LEAD

**BRADFORD GIRLS'
GRAMMAR SCHOOL**

Co-educational up to 11, Girls only 11-16

Academic Year 2022 - 23

Reviewed by	Approved by	Date of Approval	Date shared with staff	Next Review Date
M Harris	Governors	20/10/2022	31/10/22	September 23

Contents

1.	AIMS	7
2.	LEGISLATION AND GUIDANCE	7
3.	DEFINITIONS	9
4.	EQUALITY STATEMENT	9
5.	ROLES AND RESPONSIBILITIES.....	9
6.	CONFIDENTIALITY AND INFORMATION SHARING.....	16
7.	OPPORTUNITIES TO TEACH SAFEGUARDING – PREVENTATIVE CURRICULUM	17
8.	OUR ROLE IN SUPPORTING CHILDREN.....	18
9.	CHILDREN WITH SPECIAL EDUCATIONAL NEEDS, DISABILITIES OR HEALTH ISSUES	18
10.	CHILDREN AT RISK OF SPECIFIC FORMS OF ABUSE	19
11.	REMOTE LEARNING AND REMOTE WELFARE.....	19
12.	FEMALE GENITAL MUTILATION: THE MANDATORY REPORTING DUTY	20
13.	RADICALISATION AND TERRORISM	21
14.	CHANNEL	21
15.	CHILD ON CHILD ABUSE.....	ERROR! BOOKMARK NOT DEFINED.
16.	SHARING NUDES OR SEMI NUDES.....	ERROR! BOOKMARK NOT DEFINED.
17.	CHILDREN MISSING FROM EDUCATION.....	ERROR! BOOKMARK NOT DEFINED.
18.	A SAFER SCHOOL CULTURE	28
19.	SAFER RECRUITMENT, SELECTION AND PRE-EMPLOYMENT VETTING	29
20.	MANAGING ALLEGATIONS OR SAFEGUARDING CONCERNS AGAINST A MEMBER OF STAFF OR PERSON IN SCHOOL PROCEDURES.....	27
21.	TRAINING AND SUPPORT.....	28
22.	CHILD PROTECTION RECORDS.....	29
23	CHILDREN AND PARENTS' ACCESS TO CHILD PROTECTION FILES.....	30
24	ARCHIVING.....	30
25	SAFE DESTRUCTION OF PUPIL RECORD.....	31
26	SAFEGUARDING RESPONSIBILITIES FOR PUPILS IN TRANSITION.....	31
APPENDIX 2: RESPONDING TO CHILDREN WHO REPORT ABUSE.		37
APPENDIX 4: RECRUITMENT AND SELECTION CHECKLIST.....		
APPENDIX 5: CHILD EXPLOITATION RESPONSE CHECKLIST		41
APPENDIX 6: RADICALISATION RESPONSE CHECKLIST		42
APPENDIX 7: MISSING FROM SCHOOL RESPONSE CHECKLIST		43
APPENDIX 8: FE SAFEGUARDING INFORMATION SHARING FORM		44
APPENDIX 9: LADO NOTIFICATION FORM		44
APPENDIX 10: PREVENT REFERRAL FORM.....		50

This Safeguarding & Child Protection Policy is available on the school website and is reviewed and ratified annually by the governing body/board of trustees or as events, or legislation requires. Any deficiencies or weaknesses identified will be remedied without delay.

Academic year	Designated Safeguarding Lead	Deputy Designated Safeguarding Lead/s	Nominated Governor	Chair of Governors
2022-23	Measha Harris – Whole School Lisa Leary – Primary Phase	Keeley Poole – Primary/Senior Phase Kash Mahmood – Senior Phase Tehreem Khan – Primary Phase Stacy Hanson – Primary Phase Clare Martin – Principal	Christine Day	Alison Cooper

Bradford Girls Grammar School
Child Protection and Safeguarding Advice
Contact List – September 2022

Role / Agency	Name and role	Contact Details
School Designated Safeguarding Lead (DSL) / Child Protection Coordinator	Measha Harris	01274 545395 07718806340
Deputy DSL	Clare Martin – Principal Keeley Poole (Primary and Senior) Kash Mahmood (Senior Phase) Tehreem Khan (Primary) Stacy Hanson (Primary)	01274 545395
Other DSLs	Lisa Leary (Primary Phase)	01274 545395
Governor with responsibility for Child Protection and Safeguarding	Christine Day	01274 545395 (Details can be requested from school reception)
Chair Of Governors	Alison Cooper	01274 545395 (Details can be requested from school reception)
Designated Teacher for Looked After and previously Looked After Children	Victoria Sutcliffe (Senior Phase) Lisa Leary (Primary Phase)	01274 545395
SENDCo	Kash Mahmood (Senior Phase) Lisa Leary (Primary Phase)	01274 545395
PSHE / RSE Coordinator	Anita Thorpe (Secondary Phase) Keeley Poole (Primary Phase)	01274 545395
Online Safety Coordinator	Anita Thorpe (Senior Phase) Ben Wood (Primary Phase)	01274 545395
CSWS Duty and Advice / Front Door Safeguarding Hub	Urgent Child Protection concerns / initial referral	Professionals and Members of the Public– 01274 435600
CSWS Emergency Duty Team (out of hours)	Urgent Child Protection concerns	01274 431010
Education Safeguarding Team	Advice / Training / Safeguarding Audit	01274 437043
Local Authority Designated Officer	Allegations against adults in school	01274 435600 (Ask to be put through to the LADO) CPUDuty@bradford.gov.uk
NSPCC Whistleblowing Helpline	Allegations against adults in school	0800 028 0285

Family Hub	Family Support	Joanne.belgrave@bradford.gov.uk 07582101020 01274 436523
PREVENT Team	Prevent training/advice	PREVENT TEAM - 01274 376215 01274 437770 Danielle.King@bradford.gov.uk

The school is committed to safeguarding and promoting the welfare of children and young people and expects all staff, volunteers, contractors and visitors to share this commitment.

All staff refers to all adults, volunteers (including governors) or students on placement, working in any capacity in the school or in activities organised by the school which brings them in to contact with pupils of the school.

Child Protection refers to the multi-agency arrangements to identify and protect children who are or may be at risk of or suffering significant harm.

Safeguarding refers to the protection, safety and promotion of the welfare of all pupils including when in off-site provision or activities and using ICT. This includes the building of resilience and awareness of risk through the formal and informal curriculum.

Child is any pupil under the age of 18.

Glossary

- DSL Designated Safeguarding Lead
- DDSL Deputy Designated Safeguarding Lead
- SENDCo Special Education Needs and Disabilities Coordinator
- DT Designated Teacher for Looked After and previously Looked After Children.
- PSHE Personal, social, health and economic
- RSE Relationships and Sex Education
- CSWS Childrens' Social Work Services
- KCSiE Keeping Children Safe in Education (DfE, September 2022.)

Visitors to school

All visitors must sign in on arrival and collect a visitor's badge and a School Information Leaflet which outlines Child Protection and Safeguarding procedures in school and how to report any concerns regarding a child/young person or another adult in school. Visitor badges must be worn at all times when in school. Staff must ensure that visitors to school are supervised as appropriate and the requisite pre-employment checks have been completed as referenced in Part 3 of KCSiE. A **green lanyard** indicates a DBS checked visitor and a **red lanyard** indicates a non DBS checked visitor who must be accompanied at all times. All

contractors must follow the school's signing in arrangements as set out in contractual commissioning agreements.

Part One:

1. Aims

1.1 The school aims to ensure that:

- Appropriate action is taken in a timely manner to safeguard and promote children's welfare
- All staff are aware of their statutory responsibilities with respect to safeguarding, identifying children in need of early help, at risk of harm or those that have been harmed.
- Staff are properly trained in recognising and reporting safeguarding issues
- A culture of vigilance is created and maintained to ensure that we will also act in the best interests of children to protect them online and offline.
- Systems for reporting abuse are well promoted, easily understood and easily accessible for children

1.2 The Governing Body and staff of Bradford Girls Grammar School (hereinafter referred to as "the school") take as our first priority the responsibility to safeguard and promote the welfare of our pupils, to minimise risk and to work together with other agencies to ensure rigorous arrangements are in place within our school to identify, assess and support those children who are suffering harm and to keep them safe and secure whilst in our care.

1.3 The responsibilities set out in this policy apply (as appropriate) to all members of the school community including pupils, staff, governors, visitors/contractors, volunteers, supply staff, students on placement and trainees working within the school. It is fully incorporated into the whole school/college ethos and is underpinned throughout the teaching of the curriculum, within PSHE and within the safety of the physical environment provided for the pupils.

2. Legislation and guidance

2.1 This policy is based on the Department for Education's statutory guidance, Keeping Children Safe in Education (KCSIE) 2022 and Working Together to Safeguard Children (WTTSC 2018) and the Governance Handbook. We comply with this guidance and the procedures set out by the Bradford Partnership.

2.2 This policy is also based on the following legislation and guidance:

Maintained schools and specialist inclusive learning centres insert:

Section 175 of the Education Act 2002, which places a duty on schools and local authorities to safeguard and promote the welfare of pupils

The School Staffing (England) Regulations 2009, which set out what must be recorded on the single central record and the requirement for at least one person on a school interview/appointment panel to be trained in safer recruitment techniques

Part 3 of the schedule to the Education (Independent School Standards) Regulations 2014, which places a duty on academies and independent schools to safeguard and promote the welfare of pupils at the school

The Children Act 1989 (and 2004 amendment), which provides a framework for the care and protection of children

Section 5B(11) of the Female Genital Mutilation Act 2003, as inserted by section 74 of the Serious Crime Act 2015, which places a statutory duty on teachers to report to the police where they discover that female genital mutilation (FGM) appears to have been carried out on a girl under 18

Statutory guidance on FGM, which sets out responsibilities with regards to safeguarding and supporting girls affected by FGM

The Rehabilitation of Offenders Act 1974, which outlines when people with criminal convictions can work with children

Schedule 4 of the Safeguarding Vulnerable Groups Act 2006, which defines what 'regulated activity' is in relation to children

Statutory Guidance on the Prevent duty, which explains schools' duties under the Counter-Terrorism and Security Act 2015 with respect to protecting people from the risk of radicalisation and extremism

Guidance for safer working practice for those working with children and young people in education settings (GSPW) (Safer Recruitment Consortium Feb 22)

[Guidance for safer working practice for those working with children and young people in education settings \(Safer Recruitment Consortium Addendum April 2020\)](#)

[Sexual violence and sexual harassment between children in schools and colleges \(DfE 2021\)](#)

[Sharing nudes and semi-nudes: advice for education settings working with children and young people \(Department for Digital, Culture, Media & Sport and UK Council for Internet Safety 2020\)](#)

[Safeguarding and remote education during coronavirus \(COVID-19\) \(DfE, 2021b\)](#)

[Children Missing Education – Statutory guidance for local authorities \(DfE September 2016\)](#)

[When to call the police – Guidance for schools and colleges \(NPCC – 2020\)](#)

Education and Training (Welfare of Children) Act 2021
<https://www.legislation.gov.uk/ukpga/2021/16/contents/enacted>

The [Childcare \(Disqualification\) Regulations 2018](#) and [Childcare Act 2006](#), which set out who is disqualified from working with children

This policy also meets requirements relating to safeguarding and welfare in the [Statutory framework for the Early Years Foundation Stage. \(DfE 2022\)](#)

This policy also complies with our funding agreement and articles of association.

This policy should also be read in conjunction with the school's Online Safety Policy, The Acceptable Use Policies for Staff, Students and Visitors which set out the acceptable use of ICT, including the use of 3/4G devices on school site and whilst using any loaned devices at home for educational purposes.

3. Definitions

3.1 **Safeguarding and promoting the welfare of children** means:

- Protecting children from maltreatment
- Preventing impairment of children's mental or physical health or development
- Ensuring that children grow up in circumstances consistent with the provision of safe and effective care
- Taking action to enable all children to have the best outcomes

3.2 **Child protection** is part of this definition and refers to activities undertaken to prevent children suffering, or being likely to suffer, significant harm.

3.3 Appendix 1 explains the different types and indicators of abuse.

3.4 **Children** includes everyone under the age of 18.

4. Equality statement

4.1 Some children have an increased risk of abuse, and additional barriers can exist for some children with respect to recognising or disclosing it. We are committed to anti-discriminatory practice and recognise children's diverse circumstances. We ensure that all children have the same protection, regardless of any barriers they may face.

4.2 We give special consideration to children who:

- Have special educational needs or disabilities or health conditions
- Are young carers
- May experience discrimination due to their race, ethnicity, disability, religion, gender identification, sex or sexual orientation.
- Have English as an additional language
- Are known to be living in difficult situations – for example, temporary accommodation or where there are issues such as substance abuse or domestic violence
- Are at risk of FGM, sexual exploitation, forced marriage, or radicalisation
- Are asylum seekers
- Are at risk due to either their own or a family member's mental health needs
- Are missing from education
- Children who are in care, previously looked after or any children not growing up with their birth family (this covers private fostering and all kinship arrangements)
- Whose parent/carer has expressed an intention to remove them from school to be home educated

5. Roles and responsibilities

5.1 Safeguarding and child protection is **everyone's** responsibility. This policy applies to all staff (including those not directly employed by the school), volunteers,

contractors and governors in the school. Our policy and procedures also apply to extended school and off-site activities. All staff are expected to read this policy as part of their induction arrangements as well as the documents referenced in section 5.2 (All staff) below and any updates therein.

5.2 All staff

5.2.1 All staff working directly with children will read and understand their statutory responsibilities outlined in Part 1 and Annex B of the Department for Education's statutory safeguarding guidance, Keeping Children Safe in Education, and review this guidance at least annually.

5.2.2 Staff who do not work directly with children will read either Part 1 or Annex A as determined by the DSL dependent on their roles, responsibilities and contact with children.

5.2.3 Provide a safe space for pupils who are LGBT to speak out and share their concerns. The key contact for pupils to share any concerns is their Year Manager, however all staff will take responsibility for this.

5.2.4 All staff will be aware of:

- Our systems which support safeguarding, including reading and understanding their professional responsibilities as outlined in Guidance for Safer Working Practice (2022) understanding the role of the designated safeguarding lead (DSL/DDSL), reading and understanding the school behaviour policy and their safeguarding responses to children who go missing from education during the school day or otherwise and reading and understanding the school's online safety policy.
- The early help process and their role in it, including being alert to emerging problems that may warrant Early Help intervention, particularly those identified in Part 1 of KCSiE. All staff should be reporting emerging problems that may warrant early help intervention to/by **the school safeguarding lead**.
- That children's behaviours can be indicative of their emotional wellbeing and can be linked to mental health. They should be aware of behaviours that may communicate that poor wellbeing can be an indicator of factors such as abuse, neglect or exploitation. Staff should understand the children's experiences such of abuse, neglect, trauma and adverse childhood experiences can impact on children's mental health, behaviour & education.
- The process for making referrals to local authority children's social work service (CSWS) and for statutory assessments that may follow a referral, including the role they might be expected to play. Fig 1: **Summary of in-school procedures to follow where there are concerns about a child** (Page 15) illustrates the procedure to follow if you have concerns about a child's welfare. Wherever possible, speak to the DSL, DDSL or head teacher (in the absence of a DSL) first to agree a course of action. In the absence of a DSL or head teacher being available, staff must not delay in directly contacting children's social work Duty and Advice team or the police if they believe a child is at immediate risk of significant harm.
- Our work in partnership with other agencies in the best interests of the children. Requests for service to CSWS will (wherever possible) be made by the

Safeguarding Designated Staff, to the CSWS Duty and Advice team (01274435600). Where a child already has a child protection social worker, the school will immediately contact the social worker involved or in their absence, the team manager of the child protection social worker.

- What to do if they identify a safeguarding issue or a child tells them they are being abused or neglected, including specific issues such as Female Genital Mutilation (FGM), and how to maintain an appropriate level of confidentiality while liaising with relevant professionals.
- In school procedures for recording any cause for concerns and passing information on to DSLs in accordance with school's recording systems.
- The signs of different types of abuse and neglect, as well as specific safeguarding issues, such as child sexual exploitation (CSE), child criminal exploitation (CCE) FGM, radicalisation, child-on-child sexual abuse and serious and violent crime. All staff to be aware safeguarding incidents/ behaviours can occur outside school or college or be associated with outside factors CSE and CCE are forms of abuse and both occur where an individual or group takes advantage of an imbalance in power to coerce, manipulate or deceive a child into sexual or criminal activity.
- Children missing education/absconding during the school day can also be a sign of CCE, including involvement in County Lines.
- Children may not feel ready or know how to tell someone that they are being abused, exploited, neglected, and/or they may not recognise their experiences as harmful.

Appendix 1 details different kinds of abuse.

Appendix 2 provides guidance to staff on how to respond to children who report abuse

5.3 The designated safeguarding lead (DSL) and deputy designated staff.

5.3.1 The SLT DSL representative is Measha Harris. The DSL takes lead responsibility for child protection and wider safeguarding.

5.3.2 The optimal scenario is to have a trained DSL or DDSL available on site. Where this is not possible (e.g. due to self-isolating), a trained DSL or DDSL will be available to be contacted via phone or online video – for example when working from home.

5.3.3 During term time, the DSL will be available during school hours for staff to discuss any safeguarding concerns. Where a trained DSL (or deputy) is not on site, in addition to the above, a senior leader will assume responsibility for co-ordinating safeguarding on site.

(Whole School DSL) Measha Harris Email: mharris@bggs.com
Telephone: 01274 545395

(Primary Phase DSL) Lisa Leary – Email: lholden@bggs.com Telephone: 01274 545395

5.3.4 When the DSL is absent, the deputy safeguarding leads– will act as cover. Keeley Poole, Head of Lady Royd (Senior and Primary Phase) Tehreem Khan, EYFS Leader (Primary Phase), Kash Mahmood - SENCO (Senior Phase), Clare Martin – Principal

5.3.5 Out of school hours including school holidays the DSL can be contacted by email (mharris@bggs.com). During school holidays the DSL can also be contacted by phone 01274 545395.

5.3.6 The DSL will be given the time, training, resources and support to:

- Provide advice and support to other staff on child welfare and child protection matters
- Take part in strategy discussions and inter-agency meetings and/or support other staff to do so
- Contribute to the assessment of children by providing as much information as possible as part of the referral process to help social care assessments consider contexts outside the home and enable a contextual approach to harm.
- Refer suspected cases, as appropriate, to the relevant body (children's social care Duty and Advice team, Channel programme, Disclosure and Barring Service, Teaching Regulation Agency and/or police), and support staff who make such referrals directly. Provide support for staff to comply with their mandatory reporting duties in cases where FGM has been identified.
- Measha Harris, DSL, will ensure that all staff involved in direct case work of vulnerable children, where there are child protection concerns/issues, have access to regular safeguarding supervision.
- The DSL will also keep the Principal informed of any issues and liaise with local authority officers and relevant professionals for child protection concerns as appropriate.
- The DSL is responsible for responding to domestic abuse notifications from the local authority and providing support to children and their families as appropriate.
- The school will ensure representation at appropriate inter-agency meetings such as Initial and Review Child Protection Conferences, and Planning and Core Group meetings, as well as Family Support Meetings.
- Provide reports as required for meetings. Reports will, wherever possible, be shared with parents/carers at least 24 hours prior to the meeting.
- Where a child in school is subject to an inter-agency child protection plan or any multi-agency risk management plan, the DSL will contribute to the preparation, implementation and review of the plan as appropriate.
- The designated safeguarding lead and any deputies should liaise with the three safeguarding partners and work with other agencies in line with Working Together to Safeguard Children (2018). When to call the police (NPCC 2020) should help designated safeguarding leads understand when they should consider calling the police and what to expect when they do.
- Promote the educational outcomes of children with a social worker and other pupils deemed vulnerable. It is essential therefore that the DSL works in close collaboration with the DT and SENDCO as children who are in need of help and protection must also have their learning needs prioritised in planning to ensure education is a protective factor and not only by way of regular attendance at school.

The full responsibilities of the DSL are set out in Annex C of KCSIE – Role of the designated safeguarding lead. All designated safeguarding leads and deputy safeguarding leads must read and comply with this.

5.4 The governing body

5.4.1 The governing body will approve this policy at each review and hold the head teacher to account for its implementation and any actions/recommendations made by the Local Authority in respect to strengthening the school's safeguarding arrangements.

5.4.2 The governing body and proprietors will create a strong culture of safeguarding in school in order to ensure that safeguarding and child protection are at the forefront and underpin all aspects of policy and procedure development.

- i. The whole governing body will complete mandatory safeguarding training yearly, to gain a deeper understanding of new trends and legislation in safeguarding and their responsibility and roles in keeping pupils safe.

5.4.3 The governing body will appoint a lead governor to monitor the effectiveness of this and other related safeguarding policies (i.e: online safety, whistleblowing, behaviour etc..) in conjunction with the full governing body. Staff governors cannot be the lead governor with responsibility for safeguarding and child protection. Lead governors should access the LA designated safeguarding governor training every three years including online safety training.

5.4.4 In the event that safeguarding concerns, or an allegation of abuse is made against the head teacher, the chair of governors will act as the 'case manager'. Refer also to Section 16.2.

5.4.5 The governing body will ensure that the school has robust IT filtering and monitoring systems in place and should be informed in part, by the risk assessment required by the Prevent Duty in order to limit children's exposure to online risks.

5.4.6 The governing body, along with the school's senior leadership team, are responsible for satisfying themselves and obtaining written assurances from any relevant school lettings and alternative/off site providers and provisions that their safeguarding arrangements are secure, in keeping with the requirements set out in KCSIE. This includes ensuring that the provision has effective safeguarding policy/procedures/training in place for all staff. The provision follows safer recruitment processes and have clear allegation management processes. Pupils who attend alternative provisions can often have complex needs and it is important that these settings are aware of the additional risk of harm that their pupils may be vulnerable to and appropriate risk assessments/support plans are in place where pupils access provision offsite.

5.4.7 The governing body will supply information as requested by the Bradford Partnership and the Local Authority Education Safeguarding Team.

The full responsibilities of the governing body are set out in Part Two of KCSIE – The management of safeguarding. The governing body will ensure that the school is fully compliant with their statutory safeguarding responsibilities.

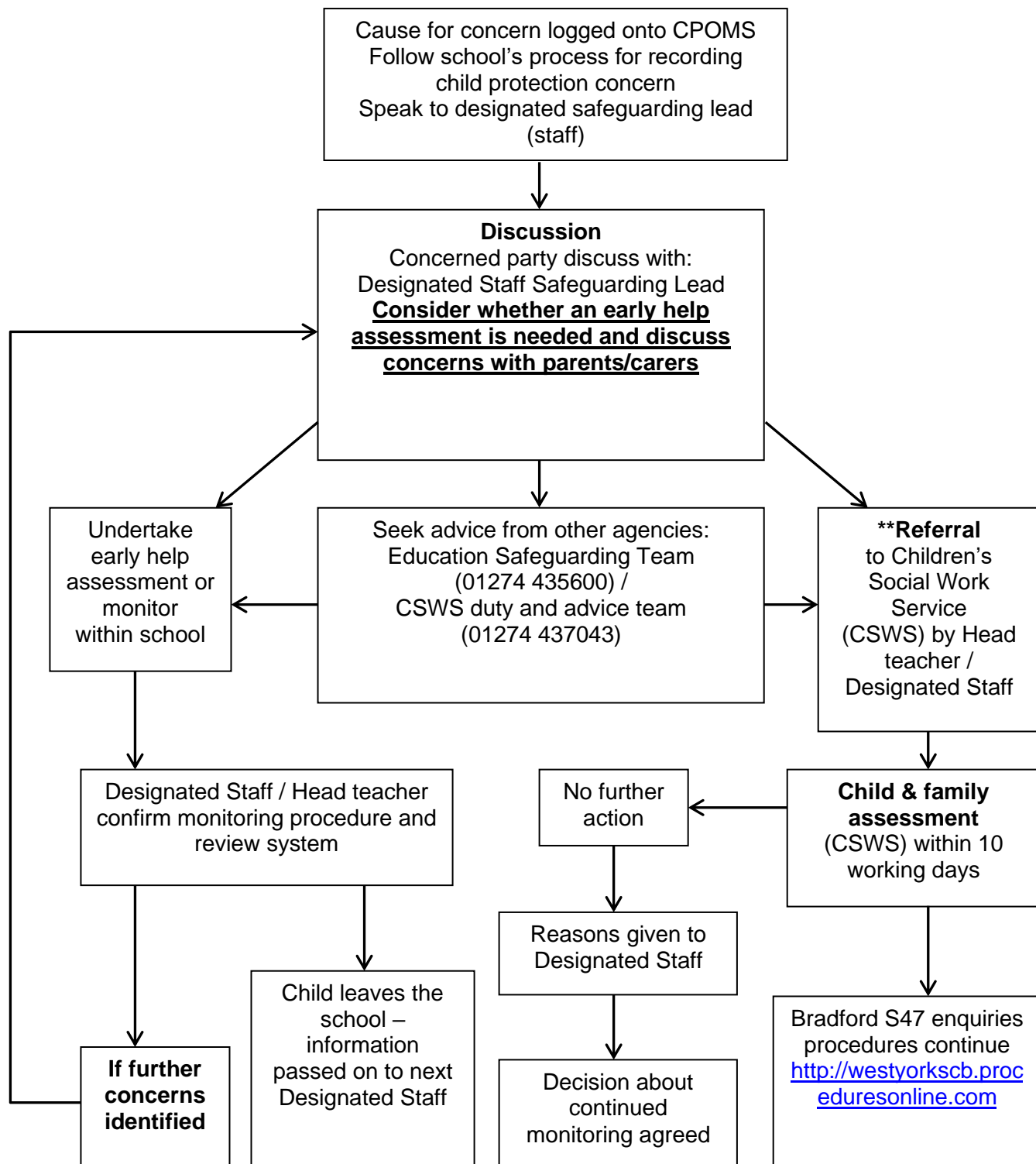
5.5 The Principal

5.5.1 The Principal is responsible for the implementation of this policy, including:

- Ensuring that staff (including temporary and supply staff) and volunteers are informed of this policy as part of their induction
- Communicating this policy to parents when their child joins the school and via the school website
- Ensuring that the roles and responsibilities of the DSL/DDSL as referenced in Annex C of KCSiE (2022) are reflected in their job description.
- Ensuring that the DSL has appropriate time, training and resources, and that there is always adequate cover if the DSL is absent

- Ensuring that they complete the one day LA course for head teachers/principals on safeguarding and child protection and that all staff undertake appropriate safeguarding and child protection training and update this every three years.
- Acting as the 'case manager' in the event of an allegation of abuse made against another member of staff (including supply staff) or volunteer, where appropriate.
- Ensuring that all recommendations made by the Local Authority in relation to strengthening the school's safeguarding arrangements are actioned in a timely fashion.

Fig 1: Summary of in-school procedures to follow where there are concerns about a child



****** If unhappy about the outcome of the referral to Children's Services Social Care, please refer to Bradford Councils Complaints Procedure on their website.

- Ensuring the relevant staffing ratios are met, where applicable
- Making sure each child in the Early Years Foundation Stage is assigned a key person

6. Confidentiality and Information Sharing

- 6.1.1 Confidentiality is an issue that needs to be understood by all those working with children, particularly in the context of safeguarding.
- 6.1.2 School recognises that the only purpose of confidentiality in this respect is to benefit the child. Staff/volunteers and visitors to school should never promise a child that they will not tell anyone about an allegation/report of abuse, and must pass any cause for concerns immediately to a designated safeguarding lead.
- 6.1.3 Confidentiality is addressed throughout this policy with respect to record-keeping (see section 18), dealing with reports of abuse (see Appendix 2), allegations of abuse against staff (see section 16.2), information sharing and working with parents (see section 6.2).

The school/college's confidentiality policy for sharing reports of pregnancy by pupils is to share information with parent/carers and GP in order to safeguard the pupil, unless this may cause a risk to the pupil. If so, children's social care will be contacted for advice. These procedures must always take into account the organisation's responsibility to safeguard the pupil and promote their welfare.

- 6.1.4 Timely information sharing is essential for effective safeguarding. This school/college will share safeguarding information as appropriate in keeping with the principles outlined in the government guidance document, [Information sharing: Advice for practitioners providing safeguarding services to children, young people, parents and carers \(DfE 2018\)](#). This guidance has been produced to support practitioners in the decisions they take to share information, which reduces the risk of harm to children and young people and promotes their well-being.
- 6.1.5 Fears about sharing information must not be allowed to stand in the way of the need to promote the welfare, and protect the safety, of children
- 6.1.6 All staff must have due regard for the relevant data protection principles which allow them to share (in the context of their role) and withhold personal information, as provided for in the Data Protection Act 2018 and GDPR.
- 6.1.7 In order to promote positive educational outcomes for vulnerable children, including children with social workers information that can help to support positive outcomes being achieved will be shared with colleagues in school that are not DSL's or DDSL's as appropriate.
- 6.1.8 If staff are in any doubt about sharing information, they must speak to the designated staff, or the principal.

6.2 Working with parents and other agencies to protect children

- 6.2.1 Parents/carers will be made aware of our in-school procedures in respect to taking any reasonable action to safeguard the welfare of its pupils. In cases where the school has reason to be concerned that a child may be suffering significant harm, ill treatment,

neglect or other forms of harm, staff will follow the procedures for responding to suspected cases of child abuse or neglect outlined in this policy document and contact CSWS Duty and Advice team to discuss their concerns.

- 6.2.2 In keeping with KCSIE, we will endeavour wherever possible to obtain at least two emergency contacts for every child in the school in case of emergencies, and in case there are welfare concerns at the home.
- 6.2.3 In general, we will discuss concerns with parents/carers before approaching other agencies and will seek to inform parents/carers and receive their consent when making a referral to another agency. Appropriate staff will approach parents/carers after consultation with the DSL. The exception to this rule will be in situations where a member of staff has reasonable cause to believe that informing parents/carers of a referral to another agency may increase the risk of significant harm to the child.
- 6.2.4 Parents/carers are informed about our Safeguarding & Child Protection policy through school prospectus, website, newsletters etc. A safeguarding & child protection statement is prominent in the school foyer/reception area.
- 6.2.5 Where a parent/carer has expressed their intention to remove a child from school with a view to educating at home, the school will, working in partnership with the LA and other key professionals invite parents/carers to a meeting where possible. Ideally, this would be before a final decision has been made, to ensure the parents/carers have considered what is in the best interests of the child. This is especially important where a child has SEND, is vulnerable, and/or has a social worker.

6.3 Multi-agency work

6.3.1 We will co-operate with CSWS in accordance with the requirements of the Children Act 1989 and allow access to child and child protection records for them to conduct section 17 or section 47 assessments.

6.3.2 In the best interests of our pupils, we will work with all relevant professionals and agencies as required to safeguard children and promote their welfare.

7. Opportunities to teach safeguarding – Preventative Curriculum

Our role in the prevention of abuse

We will identify and provide opportunities for children to develop skills, concepts, attitudes and knowledge to promote their safety and well-being.

7.1 We will ensure that children are taught about safeguarding, including online safety, and recognise that a one size fits all approach may not be appropriate for all children, and a more personalised or contextualised approach for more vulnerable children, victims of abuse and some SEND children may be needed.

7.2 As part of providing a broad and balanced curriculum, relevant issues will be addressed through the PSHE curriculum, including self-esteem, emotional literacy, assertiveness, power, relationship and sex education, online safety, online bullying, sexting, child exploitation (CSE/CCE), sharing nudes and semi-nudes, female genital mutilation (FGM), preventing radicalisation, child on child abuse, consent, online safety, anti-bullying, unhealthy and abusive family relationships. The curriculum will

reflect the statutory Relationship Education, Relationship and Sex Education and Health Education (DfE 2020).

7.3 Relevant issues will be addressed through other areas of the curriculum. For example, circle time, English, History, Drama, PSHE, Art and assemblies.

7.2 Other areas of work

7.2.1 All our policies that address issues of power and potential harm, e.g. Anti- Bullying, Equalities, Positive Handling, Behaviour, On-line Safety will be linked to ensure a whole school approach.

7.2.2 Our Safeguarding and Child Protection policy cannot be separated from the general ethos of the school which is to ensure that children are treated with respect and dignity, feel safe, and are listened to.

7.2.3 The school's online safety policy is reflective of the requirements set out in KCSiE (2022) in regards to content, contact, conduct and commerce. The school's online safety policy is aligned to the school behaviour policy and reflects our approach to issues of online safety (including the sharing of nudes and semi-nudes) that empowers us to protect and educate the whole school or college community in their use of technology and establishes mechanisms to identify, intervene in, and escalate any incident where appropriate.

8. Our role in supporting children

We will offer appropriate support to individual children who have experienced abuse or who have abused others.

8.1 In cases where children have experienced abuse/abused others, the DSL will ensure that appropriate support is offered. An individual support plan will be devised, implemented and reviewed regularly should the pupil or others affected require additional pastoral support/intervention. This plan will detail areas of support, who will be involved (i.e. learning mentor, key worker) and the child's wishes and feelings. A copy of the individual support plan will be kept in the pupil's child protection record (see Error! Reference source not found.).

8.2 For children who have sexually harmed or may have sexually harmed peers, where appropriate an AIM Risk Assessment Management Plan (RAMP) will be completed that includes safety and support planning.

9. Children with special educational needs, disabilities or health issues

9.1 We recognise that while all children have a right to be safe, some children *may* be more vulnerable to abuse e.g. those with a disability, special educational need, mental health issues or those living with domestic violence or drug/alcohol abusing parents, parents mental health issues, learning disabilities, children who are in care or previously looked after, children having adverse childhood experiences etc.. Additional barriers can exist when recognising abuse and neglect in this group, including:

- Assumptions that indicators of possible abuse such as behaviour, mood and injury relate to the child's condition without further exploration
- Pupils being more prone to peer group isolation or bullying (including prejudice-based bullying) than other pupils

- The potential for pupils with SEN, disabilities or certain health conditions being disproportionately impacted by behaviours such as bullying, without outwardly showing any signs
- Communication barriers and difficulties in managing or reporting these challenges

9.2 When the school is considering excluding, either for a fixed term period or permanently, a vulnerable pupil/ a child with additional needs and/or a pupil who has social care involvement is either subject to a S47 Child Protection plan/child in need plan or there are/have previously been child protection concerns, we will undertake an informed (multi-agency where other professionals are involved) risk-assessment prior to making the decision to exclude. Schools would be advised to speak to the named social worker for the child where the exclusion will be to the home to ensure that any risk is assessed and speak to Area Inclusion Partnership for support if required. Schools should note advice in the [DFE Exclusions Guidance September 2022](#) Section 3. In situations that a looked after child is at risk of exclusion the school will notify the Virtual School. In the event of a one-off serious incident resulting in an immediate decision to permanently exclude, the risk assessment must be completed prior to convening a meeting of the governing board.

9.3 All staff have a role in preventing impairment of children's mental health/emotional wellbeing, including promoting positive mental health and identifying where students are struggling with their Mental Health. We regularly communicate messages to students regarding wellbeing and the promotion of positive mental health strategies through the curriculum, PSHCE and Form Time.

9.4 Concerns regarding a student's mental health/emotional wellbeing should be reported to a member of the school the safeguarding team in keeping with the school's safeguarding reporting arrangement so that students can be offered appropriate support, this may include local or national online services where appropriate. In addition the school are able to make referrals to a wide range of external services to secure additional appropriate support for students.

10.Children at risk of specific forms of abuse

11.1 This school follows the Bradford Partnership (<https://www.saferbradford.co.uk/children/>) online locally agreed multi-agency procedures, in circumstances where children are at risk of or specific forms of abuse as outlined in Part 1 and Annex of B KCSIE.

11.Remote Learning and Remote Welfare

11.1 If children are being asked to learn online at home, for example because of the coronavirus pandemic, schools and colleges should follow advice from the DfE on [safeguarding and remote education \(DfE, 2021b\)](#). In addition to following the Guidance for Safer Working Practice (Safer Recruitment Consortium, 2019) and the supporting COVID Addendum for Guidance for Safer Working Practice (Safer Recruitment Consortium, 2022)

11.2 Where children are remote learning and the DSL has identified a child to be vulnerable, on the edge of social care support, or who would normally receive pastoral-type support in school, they should ensure that a robust communication plan is in place for that child or young person. The communication plans can include remote contact, phone contact, door-step visits. Other individualised contact methods should be considered and recorded. Details of this plan must be recorded, as should a record of contact made.

11.3 We recognise that school is a protective factor for children and situations such as periods of national lockdown can affect the mental health of pupils and their parents/carers. Staff will be aware of these issues and have due regard for them in setting expectations of pupils' work where they are at home.

11.4 The DSL will be available during remote learning or in case of another lockdown. Contact numbers for the DSL will be made available to staff if there are any safeguarding concerns. All concerns must also be put on CPOMS in line with BGGS current safeguarding procedures.

11.5 All students classed as vulnerable, for example students who are on a plan with children's social care or students with an EHCP, will be invited to attend school and will have weekly welfare calls to support them and their families. We will continue to be in contact with their key worker from the local authority.

11.6 The following safeguarding principles guide the school in its response to the coronavirus epidemic:

- The best interests of the children come first.
- If any member of the school community has a safeguarding concern about any child, they should continue to act immediately.
- A DSL or deputy will always be available.
- Unsuitable people are not allowed to enter the workforce or gain access to children
- Children are protected when they are online

12. Female Genital Mutilation: The Mandatory Reporting Duty

12.1 The Department for Education's Keeping Children Safe in Education explains that FGM comprises "all procedures involving partial or total removal of the external female genitalia, or other injury to the female genital organs".

12.2 FGM is illegal in the UK and a form of child abuse with long-lasting, harmful consequences. It is also known as 'female genital cutting', 'circumcision' or 'initiation'.

12.3 **Any teacher** who discovers that an act of FGM appears to have been carried out on a **pupil under 18** must immediately (in consultation with the DSL) report this to the police, personally. This is a statutory duty, and teachers will face disciplinary sanctions for failing to meet it.

12.4 The duty above does not apply in cases where a pupil is *at risk* of FGM or FGM is suspected but is not known to have been carried out. Staff must not examine pupils.

12.5 **Any other member of staff** who discovers that an act of FGM appears to have been carried out on a **pupil under 18** must speak to the DSL and follow our local safeguarding procedures.

12.6 **Any member of staff** who suspects a pupil is *at risk* of FGM, must speak to the DSL and follow our local safeguarding children's partnership procedures.

13. Radicalisation and Terrorism

- 13.1 Radicalisation refers to the process by which a person comes to support terrorism and forms of extremism leading to terrorism. Terrorism is an action that endangers or causes serious violence to a person/people; causes serious damage to property; or seriously interferes or disrupts an electronic system. The use or threat must be designed to influence the government or to intimidate the public and is made for the purpose of advancing a political, religious or ideological cause.
- 13.2 If staff are concerned about a change in the behaviour of an individual or see something that concerns them **(this could be a colleague too)** they must seek advice appropriately with the DSL who must contact the Education Safeguarding Team or the Prevent Education Officer– Geraldine Cooper, 01274 437207.
- 13.3 Schools and colleges are expected to assess the risk of children being drawn into terrorism, including support for extremist ideas that are part of terrorist ideology. This means being able to demonstrate both a general understanding of the risks affecting children and young people in the area and a specific understanding of how to identify individual children who may be at risk of radicalisation and what to do to support them. The Education Safeguarding Team and the Prevent team can advise and identify local referral pathways.
- 13.4 Effective early help relies on all staff to be vigilant and aware of the nature of the risk for children and young people, and what support may be available. Our school will ensure that as far as possible all front-line staff will undertake Prevent awareness training (e.g. Workshop to Raise Awareness of Prevent [WRAP]).

14. Channel

- 14.1 Channel is a voluntary, confidential support programme which focuses on providing support at an early stage to people who are identified as being vulnerable to being drawn into terrorism. Prevent referrals may be passed to a multi-agency Channel panel, which will discuss the individual referred to determine whether they are vulnerable to being drawn into terrorism and consider the appropriate support required. A representative from the school or college may be asked to attend the Channel panel to help with this assessment. An individual's engagement with the programme is entirely voluntary at all stages.

15. Child on Child Abuse

- 15.1 We recognise that children are capable of abusing their peers and that child on child abuse can manifest in many different ways, including bullying, cyber bullying, criminal and sexual exploitation, sexual harassment and violence, initiation/hazing, sharing of nudes and semi-nudes up skirting (taking a picture under a person's clothing without them knowing, with the intention of viewing their genitals or buttocks to obtain sexual gratification, or cause the victim humiliation, distress or alarm) and abuse within intimate partner relationships. It is very clear that this type of abuse should always be treated seriously, and never just as banter, part of growing up or boys being boys. Our school has a zero tolerance approach to such attitudes and behaviours. We will take steps to minimise the risk of child on child abuse by ensuring students recognise behaviour that is not appropriate and understand how to stay safe and challenge and report unwanted behaviours.

We will also regularly review the school site and school activities to further minimise the risk of child-on-child abuse occurring.

We recognise that abuse can often go unreported or be reported latterly. We will encourage and support students to report child-on -child abuse to trusted adults in school or the NSPCC helpline.

Most cases of pupils hurting other pupils will be dealt with under our school's behaviour policy, but this child protection and safeguarding policy will apply to any allegations that raise safeguarding concerns.

All concerns around child on child abuse will be taken seriously, reported, investigated, recorded and managed in line with the child protection procedures outlined in this policy. Our school will ensure that at least one member of the school's safeguarding team has completed training on understanding and managing harmful sexual behaviour in education settings. The DSL is responsible for providing support to all children involved in incidents of child on child sexual abuse.

15.2 We recognise that sexual violence and/or sexual harassment can happen anywhere including educational settings. Where concerns of sexual violence or sexual harassment are witnessed, disclosed or reported to the school (including those that have happened outside of school or online) the concern will be taken seriously. We recognise that sexual violence and harassment exist on a continuum and may overlap; they can occur online and face to face (both physical and verbal) and are never acceptable. In responding to such concerns the DSL may contact the Duty and Advice team if appropriate and follow the principles set out in Part 5 of KCSiE and the DfE guidance on Sexual Violence and Sexual Harassment (2022).

15.3 We will ensure that the needs of children who may have/have sexually harmed others will be considered separately from the needs of those who have/may have been subject to sexual harm. Children who have/may have sexually harmed others will be responded to in a way that meets their needs as well as protecting others within the school community, there must be a coordinated multi-agency approach to risk assessment which will include involvement of parent/carers, social care, health, police and youth justice (where appropriate).

15.4 We will ensure that all children who may have/have been sexually harmed will be taken seriously and that they will be supported and kept safe. Where appropriate support plans will be put in place for children subjected to sexual harm.

15.5 In cases where allegations of sexual violence and/or harassment are found to be unsubstantiated, unfounded, false or malicious, the DSL will consider whether the child or person who has made the allegation is in need of support or may have been abused by someone else. In cases where the report is found to be deliberately invented or malicious the school will consider whether it is appropriate to take any disciplinary action in keeping with the school's behaviour management policy.

15.6 Where child exploitation (ie; criminal, sexual, trafficking, modern day slavery etc.), or the risk of it, is suspected, frontline practitioners must notify the designated member of staff for child protection, in line with the child protection policy reporting systems.

The DSL must complete the child exploitation risk identification tool for partners and refer to the table at the end of the tool to help decide how to proceed. A copy of the completed tool must be kept in the child's child protection records for future reference.

- 15.7 If the child /young person already has an allocated social worker, the DSL must contact them (or their team manager) to discuss any concerns about child exploitation. Where children may currently be looked after or previously looked after the DSL should also notify the Designated Teacher for children looked after.
- 15.8 A copy of the child exploitation risk identification tool for partners for partners can be obtained from the Safer Bradford Website.
- 15.9 We will ensure the school works in partnership with parents / carers and other agencies as appropriate. This includes facilitating return to home interviews as requested.

16. Sharing Nudes and Semi Nudes

Staff responsibilities when responding to an incident

- 16.1 If any adult in school is made aware of an incident involving the consensual or non-consensual sharing of nude or semi-nude images/videos (also known as 'sexting' or 'youth produced sexual imagery'), they must report it to the DSL immediately.

They must **not**:

- › View, copy, print, share, store or save the imagery yourself, or ask a pupil to share or download it (if you have already viewed the imagery by accident, you must report this to the DSL)
- › Delete the imagery or ask the pupil to delete it
- › Ask the pupil(s) who are involved in the incident to disclose information regarding the imagery (this is the DSL's responsibility)
- › Share information about the incident with other members of staff, the pupil(s) it involves or their, or other, parents and/or carers
- › Say or do anything to blame or shame any young people involved

DSL Responsibilities

- 16.2 Following a report of an incident, the DSL will hold an initial review meeting with appropriate school staff – this may include the staff member who reported the incident and the safeguarding or leadership team that deals with safeguarding concerns. This meeting will consider the initial evidence and aim to determine:

- › Whether there is an immediate risk to pupil(s)
- › If a referral needs to be made to the police and/or children's social care
- › If it is necessary to view the image(s) in order to safeguard the young person (in most cases, images or videos should not be viewed)
- › What further information is required to decide on the best response
- › Whether the image(s) has been shared widely and via what services and/or platforms (this may be unknown)
- › Whether immediate action should be taken to delete or remove images or videos from devices or online services
- › Any relevant facts about the pupils involved which would influence risk assessment
- › If there is a need to contact another school, college, setting or individual
- › Whether to contact parents or carers of the pupils involved (in most cases parents/carers should be involved)

The DSL will make an immediate referral to police and/or children's social care if:

- › The incident involves an adult
- › There is reason to believe that a young person has been coerced, blackmailed or groomed, or if there are concerns about their capacity to consent (for example, owing to special educational needs)
- › What the DSL knows about the images or videos suggests the content depicts sexual acts which are unusual for the young person's developmental stage, or are violent
- › The imagery involves sexual acts and any pupil in the images or videos is under 13
- › The DSL has reason to believe a pupil is at immediate risk of harm owing to the sharing of nudes and semi-nudes (for example, the young person is presenting as suicidal or self-harming)

16.3 If none of the above apply then the DSL, in consultation with the headteacher and other members of staff as appropriate, may decide to respond to the incident without involving the police or children's social care. The decision will be made and recorded in line with the procedures set out in this policy.

17. Children Missing from Education

17.1 A child going missing from education is a potential indicator of abuse or neglect. Where a child is reported to be missing education we will comply with our statutory duty to inform the local authority of any pupil who falls within the reporting notification requirements outlined in [Children Missing Education – Statutory guidance for local authorities \(DfE September 2016\)](#) and follow the Bradford Children's Services LA procedure and contact: cme@bradford.gov.uk. Tel: 01274 438877.

17.2 Children who are absent, abscond or go missing during the school day are vulnerable and at potential risk of abuse, neglect, CSE or CCE including involvement in county lines. School and college staff members must follow the school's or college's procedures for dealing with children who are absent/ go missing, particularly on repeat occasions, to help identify the risk of abuse and neglect including sexual abuse or exploitation and to help prevent the risks of their going missing in future (see [Appendix 10](#)).

18. A Safer School Culture

The governing board will ensure that the following appropriate policies, and procedures are in place and shared with staff at the point of induction, in order for appropriate action to be taken in a timely manner to safeguard and promote children's welfare:

- Whistle Blowing/Confidential reporting policies (guidance to staff and volunteers on how they can raise concerns and receive appropriate feedback on action taken when staff have concerns about any adult's behaviour)
- School's procedures for managing children who are missing education
- Guidance on Safer Working Practices
- Safeguarding and Child Protection policy (including online safety).
- School behaviour policy
- The names, roles and responsibilities of the designated safeguarding lead and any deputies.

19. Safer Recruitment, selection and pre-employment vetting

- 19.1 The school pays full regard and commitment to following the safer recruitment, selection and pre-employment vetting procedures as outlined in part three of KCSiE
- 19.2 The school will maintain a single central record which demonstrates the relevant vetting checks required including: a barred list check, DBS check at the correct level, identity, qualifications, prohibition order and right to work in the UK. (see Part 3 of KCSiE).
- 19.3 All recruitment materials will include reference to the school's commitment to safeguarding and promoting the wellbeing of pupils. (see [Appendix 6](#))
- 19.4 The school will ensure that all recruitment panels include at least one person that has undertaken the safer recruitment consortium, safer recruitment training as recommended by the Local Authority.
- 19.5 For individuals who have lived or worked outside the UK, in addition to the same checks as all other staff, the school will complete any additional checks required to satisfy themselves that the individual is suitable to work with children. This may include obtaining a letter from the professional regulatory authority in the country (countries) in which the candidate has worked confirming that they have not imposed any sanctions or restrictions, and /or that they are aware of any reason why they are unsuitable to teach where possible.
- 19.6 The school/ will ensure that written risk assessments are undertaken in situations where information provided on DBS certificates necessitates so. Written risk assessments must be undertaken for all volunteers **not** engaging in regulated activity. Advice and support for carrying out risk assessments can be accessed through the school's HR Advisor/Provider/Contact or the Education Safeguarding Team.
- 20 We will also consider carrying out an online search on shortlisted candidates to help identify any incidents or issues that are publicly available online.

21 Managing allegations or safeguarding concerns against a member of staff or person in school procedures.

- 21.1 These procedures must be followed in any case in which it is alleged that a member of staff (including supply staff), governor, visiting professional or volunteer has met the harm test, this includes where an adult has:
- a) behaved in a way that has harmed a child or may have harmed a child
 - b) possibly committed a criminal offence against or related to a child
 - c) behaved towards a child or children in a way that indicates s/he may pose a risk of harm to children
 - d) behaved or may have behaved in a way that indicates they may not be suitable to work with children. *(This includes any behaviour that may have happened outside of school that might make the individual unsuitable to work with children. This is known as transferable risk.)*
- 21.2 All adults working in school have duty to disclose to the head teacher/principal (or chair of governors where appropriate) where their relationships and associations both within and outside of the workplace (including online) may have implications for safeguarding children in school.

21.3 Examples of behaviours that would warrant an allegation or safeguarding concern by a member of staff could include:

- Physical, for example intentional use of force as a punishment, slapping, use of objects to hit with, throwing objects or rough physical handling.
- Emotional, for example intimidation, belittling, scapegoating, sarcasm, lack of respect for children's rights, and attitudes which discriminate on the grounds of race, gender, sex, disability or sexuality.
- Sexual, for example sexualised behaviour towards pupils, grooming, sexual harassment, sexual assault and rape, sending inappropriate messages through social media and other technologies.
- Neglect which may include failing to act to protect a child or children, failing to seek medical attention or failure to carry out appropriate/proper risk assessment etc.

21.4 A safeguarding complaint that meets the above criteria must be reported to the Principal immediately. If the complaint involves the Principal then the next most senior member of staff must be informed and the chair of governors.

20.5 Where the Principal determines that a safeguarding allegation does not meet the harm threshold in line with the criteria above they will refer the matter to be managed in line with paragraphs 20.8 – 20.9 (inc.) by a designated manager with appropriate safeguarding training. It is important for Head teachers to carefully consider who in school is best placed to manage concerns that do not meet the harm threshold and ensure appropriate action is taken given the sensitive and confidential nature of the information relating to staff over time. In many cases Head teachers' may decide to retain this role in the event that they have appropriate safeguarding training.

20.6 All staff must fully understand that any adult behaviours that deviate from the Guidance for Safer Working Practice, including inappropriate conduct outside of work are a concern, even if they are low-level. Low-level concerns are concerns that do not meet the harm test/allegations threshold. Examples of such behaviour include:

- *Being over familiar with children*
- *Having favourites*
- *Taking photographs of children on their mobile phone*
- *Engaging with a child on a one-to-one basis in a secluded area or behind a closed door; or*
- *Using inappropriate sexualised, intimidating or offensive language.*
- *Humiliating pupils*

20.7 The case manager should ensure that the child is not at risk and where appropriate ensure that the child is referred to the local authority Duty and Advice team as referenced in Part 1 of KCSIE.

20.8 The case manager should gather as much information about the alleged incident as necessary in order to establish whether there is substance to the allegation. In situations where the case manager determines that the harm test has not been met the case manager must ensure that there is a clear record of the incident, include any actions (including whether any HR advice had been sought and actioned) taken to address the concern raised. This record must be kept confidential, stored securely

and comply with the Data Protection Act 2018 and the UK GDPR (2018). Records of low level concerns will be reviewed so that any patterns of recurring low level concerns can be identified and responded to appropriately, this may include a referral to the LADO where repeated behaviours indicate an individual may not be suitable to work with children. **The school have a separate policy in school for low level concerns.**

- 20.9 All low level concern records will be kept until the individual leaves their employment).
- 20.10 In situations where the case manager has sufficient information to suggest that the harm test/allegations threshold has been met, the case manager must use the local authority designated officer (LADO) notification form (see [Appendix 12](#)) in order to assess the level of concern, **prior to contacting the LADO**. As part of this initial consideration, the case manager should consult with their school's HR Advisor/provider/contact or in the case of a supply member of staff the supply agency safeguarding lead/senior manager. The completed LADO notification form must be sent to lado@bradford.gov.uk **within one working day of the allegation being made**. This will assist the case manager and HR/supply agency senior manager in consultation with the LADO to decide on the most appropriate course of action. This includes when to inform the member of staff of the concerns raised. Parents or carers of the child or children involved should be told about the allegation as soon as possible if they do not already know of it.
- 20.11 The case manager **must** not carry out an investigation or **directly interview** any child/ witness/ or the individual whom the concern relates too, until the above process has been duly completed and relevant partners have been consulted. However, statements of any alleged incidents of harm should be obtained as appropriate at the earliest opportunity in order to establish facts from relevant individuals.
- 20.12 A multi-agency allegations management meeting may be arranged to look at the complaint in its widest context. The case manager must attend this meeting, which will be arranged by the LADO. All issues must be recorded and the outcome reached must be noted to ensure closure.
- 20.13 In many cases it may be appropriate to provide further training and support to staff/volunteers and ensure that they are clear about the expectations for their conduct.
- 20.14 In more serious cases, allegations may be investigated under the formal disciplinary procedures and, where allegations are upheld, formal warnings issued as well as specific training and support. In cases where children/young people may be at further risk and/or evidence/witnesses may be compromised and/or the allegations and so serious that they may, if upheld, constitute gross misconduct, suspension of the member of staff/volunteer may be appropriate and should be considered in line with the school's Disciplinary Policy.
- 20.15 Any staff/volunteers who are dismissed by the school for gross misconduct or cumulative misconduct relating to safeguarding of children/young people will be referred to the DBS for consideration of barring. Similarly, where the school has a reasonable belief that the member of staff/volunteer would have been dismissed by the school had they been employed at the time of the conclusion of investigations, they will be referred to the DBS. The school will keep written records of all of the above.

- **LADO Contacts: Dawn Holt - 01274434343**
- **Advice can also be sought from the Education Safeguarding Team - 01274 437043**

20.16 Where a staff member feels unable to raise an issue with their employer or feels that their genuine concerns are not being addressed, staff can contact any of the professionals named in the above paragraph, in addition to other whistleblowing channels which may be open to them.

20.17 The Bradford City Council whistleblowing policy states that concerns can be raised by the following methods:

- Strategic Director, Children's Services – Bradford Council Mark Douglas 01274 431266
- The NSPCC whistleblowing helpline is available for staff who do not feel able to raise concerns regarding child protection failures internally. Staff can call: 0800 028 0285 – line is available from 8:00am to 8:00pm, Monday to Friday and Email: help@nspcc.org.uk.

21 Training and Support

21.1 All staff members will be made aware of systems within our school that support safeguarding and these will be explained to them as part of our staff induction. This includes: the school's/college's safeguarding/child protection policy; the school's safer working practice document and the school's whistleblowing procedures as well as their responsibilities to read and understand KCSiE Part 1 and Annex B, this must be done as part of their induction and reviewed annually.

21.2 We recognise the stressful and traumatic nature of child protection work. Support is available for any member of staff from any of the safeguarding team in school. Access to regular and timely supervision is an essential form of support for all designated safeguarding staff. Children's Services Education Safeguarding team are also potentially available for advice and support (Tel: 01274435600).

21.3 Designated Safeguarding staff must have attended the 3-day Children's Services Education child protection training course. They will attend refresher training at least every two years. The DSL will undertake Prevent Awareness Training (e.g. Workshop to Raise Awareness of Prevent [WRAP]) to enable them to provide advice and support to other members of staff on protecting children from the risk of radicalisation.

21.4 The school will ensure all staff including temporary and volunteers receive induction and updated INSET appropriate to their roles and responsibilities, especially staff new to the school. All staff will access basic child protection training including online safety as part of the school's induction arrangements and refresher training at least every three years. All staff should have regular safeguarding, child protection training and online safety updates (for example, via email, e-bulletins, staff meetings), as required, but at least annually, to provide them with relevant skills and knowledge to safeguard children effectively. Training will include briefings on how to manage a report of child-on-child sexual violence or harassment and on the government's anti-radicalisation strategy, PREVENT, to enable staff to identify children at risk of being drawn into terrorism and to challenge extremist ideas .

- 21.5 The Principal will attend appropriate 1 day safeguarding training at least every three years.
- 21.6 Governors, including the nominated governor will attend specific training for their role, updated at least every three years.
- 21.7 Any training accessed through third party/independent providers must reflect the LSCP protocols and the LSCP minimum standards checklist. This training will be recorded by the school on a separate database.
- 21.8 Principal and at least one member of the governing body that is not a staff governor must complete the National Safer Recruitment Training and refresh this training every five years.

22 Child Protection Records

22.1 The responsibility to maintain, process, share, transfer and store child protection and safeguarding records in accordance with the Data Protection Act 2018 and the GDPR principles is the responsibility of the DSL and any safeguarding deputies. Child protection information will be held securely, with access being restricted to the DSL and their deputies, head teacher and in cases of Early Help, the nominated lead professional, if this is not a designated safeguarding lead/officer. For further information please see Early Help. The following information must be kept securely with restricted access, whether paper or electronic:

- Chronology (summary of significant events and the actions and involvement of the school/college)
- A clear and comprehensive summary of the concern
- Details of how the concern was followed up and resolved
- A note of any action taken, decisions reached and the outcome.
- All completed child protection cause for concern records
- Any child protection information received from the child's previous educational establishment
- Records of discussions, telephone calls and meetings with colleagues and other agencies or services
- Professional consultations
- Letters and emails sent and received relating to child protection matters
- Referral forms sent to CSWS, other external agencies or education-based services
- Minutes or notes of meetings, e.g. child protection conferences, core group meetings, etc., copied to the file of each child in the family, as appropriate
- Formal plans for, or linked to, the child e.g. child protection plans, Early Help (previously known as CAF's), risk assessments etc
- A copy of any support plan for the pupil concerned

22.2 Where a pupil leaves their existing provision, we will ensure that the child protection file is transferred securely and separately from the main pupil file to the receiving school/educational establishment (where this is known) as soon as possible and within 5 school days. This is a legal requirement set out under regulation 9 (3) of 'The Education (Pupil Information – England) Regulations 2005. A copy of the chronology must be retained for audit purposes.

22.3 Where there is an existing risk management plan/assessment in place for behaviours that are deemed potentially harmful to the pupil or others (i.e self-harming or harmful sexualised behaviour), this information must be shared with the destination provision prior to the pupil starting so that appropriate care and control measures can be put in place to mitigate the potential of any risk of further harm occurring. The DSL will also consider if it would be appropriate to share any information with the new school or college in advance of a child leaving, for example prior to a transfer programme.

22.4 Where a child leaves a school before statutory school leaving age, the child protection file must be transferred to the new school or college. There is no need to keep written or electronic copies of the child protection records, therefore these will be deleted from electronic systems once the successful transfer has been confirmed. The exception to this rule will be in any of the following instances:

- Where a vulnerable young person is moving to a Further Education establishment, consideration will be given to the pupil's wishes and feelings about their child protection information being passed on, in order that the FE establishment can provide appropriate support. In cases where it is deemed appropriate, relevant child protection information must be shared via the FE Safeguarding Information Sharing Form only. The original records will be retained and archived by the school/college. Due consideration must be given to the sharing of any additional information requested by the receiving establishment.
- Where the destination school is not known (*the original records will be retained by the school/college*)
- Where the child has not attended the nominated school (*the original records will be retained by the school/college*)
- There is any on-going legal action (*the original file will be retained by the school and a copy sent*)
- Where a child moves to a different school outside of the Bradford authority a copy of the child protection record will be retained for reference.

22.5 Pupil records will be transferred in a secure manner, for example, through secure electronic file transfer or by hand. When hand-delivering pupil records, a list of the names of those pupils whose records are being transferred and the name of the school/college they are being transferred to must be made and a signature obtained from the receiving school/college as proof of receipt. When sending records through secure electronic file transfer, a delivery and read receipt of the must be retained for audit purposes.

22.6 If a pupil moves from our school, child protection records will be forwarded onto the named DSL at the new school, with due regard to their confidential nature. Good practice suggests that this will always be done with a face to face handover between designated staff or a verbal conversation is had over the telephone if a face to face handover is not possible. A signed receipt of file transfer or electronic delivery and read receipt must be obtained for audit purposes by the delivering school.

22.7 If sending by post, children records will be sent "Special Delivery". A note of the special delivery number will also be made to enable the records to be tracked and traced via Royal Mail.

22.8 For audit purposes a note of all pupil records transferred or received will be kept in either paper or electronic format. This will include the child's name, date of birth, where and to whom the records have been sent, and the date sent and/or received. A copy of the child protection chronology will also be retained for audit purposes and kept securely.

22.9 If a pupil is permanently excluded and moves to an alternative or specialist provision, child protection records will be forwarded onto the relevant organisation in accordance with the 'The Education (Pupil Information – England) Regulations 2005, following the above procedure for delivery of the records.

22.10 If a parent chooses to electively home educate (EHE) their child, please contact the EHE team on ElectiveHEducation@bradford.gov.uk or 01274 439340 for information on where the child protection record must be sent.

22.11 When a DSL member of staff resigns their post or no longer has child protection responsibility, there will be a full face to face handover/exchange of information with the new post holder.

22.12 In exceptional circumstances when a face to face handover is unfeasible, it is the responsibility of the head teacher to ensure that the new post holder is fully conversant with all procedures and case files.

22.13 All DSLs receiving current (live) files or closed files must keep all contents enclosed and not remove any material.

22.14 All receipts confirming file transfer must be kept in accordance with the recommended retention periods. For further information refer to the archiving section.

23 Children's and parents' access to child protection files

23.1 Under Data Protection legislation (General Data Protection Regulation & Data Protection Act 2018) a pupil or their nominated representative have a number of legal right in respect of information relating to them. These rights include the right to access and the right to rectification of inaccurate data. Therefore all information will be accurately recorded, objective in nature and expressed in a professional manner.

23.2 Any child who has a child protection file has a right to request access to it. However, neither the child nor the parent has an automatic right to see all the information held in child protection records. Information can be withheld if disclosure:

- could cause serious harm or is likely to cause serious harm to the physical or mental health or condition of the child or another person; or
- could reveal that the child or another person has been a subject of or may be at risk of child abuse, and the disclosure is not in the best interests of the child; or
- is likely to prejudice an on-going criminal investigation; or
- information about the child also relates to another person who could be identified from it or the information has been given by another person who could be identified as the source, unless the person has consented to the disclosure or the person providing the information is an employee of the establishment or the Local Authority.

23.3 The establishment's report to the child protection conference will (wherever possible) be shared with the child, if old enough, and parent at least two days before the conference.

24 Archiving

24.1 The school that the pupil attended until statutory school leaving age (or the school where the pupil completed sixth form studies) is responsible for retaining any child protection records they may hold. The recommended retention periods is 35 years

from closure when there has been a referral to CSWS. If no referral has been made to CSWS, the child protection record will be retained until the child's 25th birthday, after which point the file will be destroyed confidentially from our electronic system. The decision of how and where to store child protection files will be made by the school via the governing board. Due to sensitivity of the information, the records will continue to be held in a secure area with limited access e.g. designated officer or head teacher. The DSL is responsible for ensuring that all CP files are archived in accordance with the timescales referenced above. The DSL is responsible for ensuring that the appropriate timeframes for archiving and destroying child protection records referenced above are set on electronic systems accordingly for each pupil.

- 24.2 Safeguarding records which contain information about allegations of sexual abuse will be retained for the Independent Inquiry into Child Sexual Abuse (IICSA), for the term of the inquiry.

25 Safe Destruction of the pupil record

- 25.1 Where records have been identified for destruction, they will be disposed of securely at the end of the academic year (or as soon as practical before that time). Records which have been identified for destruction will be confidentially destroyed. This is because they will either contain personal or sensitive information, which is subject to the requirements of Data Protection legislation or they will contain information which is confidential to school or the Local Education Authority. Information will be shredded (or deleted as appropriate) prior to disposal or confidential disposal can be arranged through private contractors. For audit purposes the school will maintain a list of records which have been destroyed and who authorised their destruction. This can be kept securely in either paper or an electronic format.

26 Safeguarding responsibilities for pupils in transition

- 26.1 In the event that a pupil transitions full-time from a primary setting into a high school setting before the end of their academic school year 6, the high school must place a pupil on their admissions register on the first day that the pupil attends and submit a new starter form to the local authority admissions team. Once the pupil is registered at the new school, the previous school can remove the pupil from their register. All safeguarding responsibilities, including attendance management, for the pupil will transfer to the head teacher and/or the senior designated safeguarding lead of the secondary setting. All child protection files, and risk assessments will be transferred in keeping with the guidance outlined In section 18 of this policy – Child Protection Records
- 26.2 Where a vulnerable pupil transitions from a high school setting to a post-16 provision the school must complete the FE Safeguarding Information Sharing Form only ([Appendix 11](#)). All existing child protection records must be archived in keeping with the guidance outlined in section 18.3 of this policy –Archiving.

Appendix 1: Definitions and indicators of abuse

Reference: Working Together to Safeguard Children (DfE 2018). See also KCSiE Part one and Annex B.

Neglect: Neglect is the persistent failure to meet a child's basic physical and/or psychological needs, likely to result in the serious impairment of the child's health or development. Neglect may occur during pregnancy as a result maternal substance abuse. Once a child is born, neglect may involve a parent or carer failing to:

- Provide adequate food, clothing and shelter (including exclusion from home or abandonment);
- Protect a child from physical and emotional harm or danger;
- Ensure adequate supervision (including the use of inadequate care-givers)
- Ensure access to appropriate medical care or treatment

It may also include neglect of, or unresponsiveness to, a child's basic emotional needs.

Examples which may indicate neglect (it is not designed to be used as a checklist):

- Hunger
- Tiredness or listlessness
- Child dirty or unkempt
- Poorly or inappropriately clad for the weather
- Poor school attendance or often late for school
- Poor concentration
- Affection or attention seeking behaviour
- Untreated illnesses/injuries
- Pallid complexion
- Stealing or scavenging compulsively
- Failure to achieve developmental milestones, for example growth, weight
- Failure to develop intellectually or socially
- Neurotic behaviour

Physical abuse: Physical abuse may involve hitting, shaking, throwing, poisoning, burning or scalding, drowning, suffocating or otherwise causing physical harm to a child. Physical harm may also be caused when a parent or carer fabricates the symptoms of, or deliberately induces, illness in a child.

Examples which may indicate physical abuse (not to be used as a checklist):

- Patterns of bruising; inconsistent account of how bruising or injuries occurred
- Finger, hand or nail marks, black eyes
- Bite marks
- Round burn marks, burns and scalds
- Lacerations, wealds
- Fractures
- Bald patches
- Symptoms of drug or alcohol intoxication or poisoning
- Unaccountable covering of limbs, even in hot weather
- Fear of going home or parents being contacted
- Fear of medical help
- Fear of changing for PE
- Inexplicable fear of adults or over-compliance
- Violence or aggression towards others including bullying
- Isolation from peers

Sexual abuse: involves forcing or enticing a child or young person to take part in sexual activities, not necessarily involving a high level of violence, whether or not the child is aware of what is happening. The activities may involve physical contact, including assault by penetration (for example rape or oral sex) or non-penetrative acts such as masturbation, kissing, rubbing and touching outside of clothing. They may also include non-contact activities, such as involving children in looking at, or in the production of, sexual images, watching sexual activities, encouraging children to behave in sexually inappropriate ways, or grooming a child in preparation for abuse. Sexual abuse can take place online, and technology can be used to facilitate offline abuse. Sexual abuse is not solely perpetrated by adult males. Women can also commit acts of sexual abuse, as can other children.

Examples which may indicate sexual abuse (it is not designed to be used as a checklist):

- Sexually explicit play or behaviour or age-inappropriate knowledge
- Anal or vaginal discharge, soreness or scratching
- Reluctance to go home
- Inability to concentrate, tiredness
- Refusal to communicate.
- Thrush, Persistent complaints of stomach disorders or pains
- Eating disorders, for example anorexia nervosa and bulimia
- Attention seeking behaviour, self-mutilation, substance abuse
- Aggressive behaviour including sexual harassment or molestation
- Unusually compliant
- Regressive behaviour, Enuresis, soiling
- Frequent or open masturbation, touching others inappropriately
- Depression, withdrawal, isolation from peer group
- Reluctance to undress for PE or swimming
- Bruises, scratches in genital area

Emotional abuse: Emotional abuse is the persistent emotional maltreatment of a child such as to cause severe and persistent adverse effects on the child's emotional development. It may involve conveying to children that they are worthless or unloved, inadequate, or valued only insofar as they meet the needs of another person. It may include not giving the child opportunities to express their views, deliberately silencing them or 'making fun' of what they say or how they communicate. It may feature age or developmentally inappropriate expectations being imposed on children. These may include interactions that are beyond the child's developmental capability, as well as overprotection and limitation of exploration and learning, or preventing the child in participating in normal social interaction. It may also involve seeing or hearing the ill-treatment of another. It may involve serious bullying (including cyber bullying), causing children frequently to feel frightened or in danger, or the exploitation or corruption of children. Some level of emotional abuse is involved in all types of maltreatment

Examples which may indicate emotional abuse (it is not designed to be used as a checklist):

- Over-reaction to mistakes, continual self-deprecation
- Delayed physical, mental, emotional development
- Sudden speech or sensory disorders
- Inappropriate emotional responses, fantasies
- Neurotic behaviour: rocking, banging head, regression, tics and twitches
- Self-harming, drug or solvent abuse
- Fear of parents being contacted
- Running away / Going missing
- Compulsive stealing
- Masturbation, Appetite disorders - anorexia nervosa, bulimia
- Soiling, smearing faeces, enuresis

N.B.: Some situations where children stop communication suddenly (known as “traumatic mutism”) may indicate maltreatment.

Child Sexual Exploitation: Child sexual exploitation is a form of child sexual abuse. It occurs where an individual or group takes advantage of an imbalance of power to coerce, manipulate or deceive a child or young person under the age of 18 into sexual activity (a) in exchange for something the victim needs or wants, and/or (b) for the financial advantage or increased status of the perpetrator or facilitator. The victim may have been sexually exploited even if the sexual activity appears consensual. Child sexual exploitation does not always involve physical contact; it can also occur through the use of technology.

Reference: Child Sexual Exploitation. *Definition and a guide for practitioners, local leaders and decision makers working to protect children from child sexual exploitation* (DfE 2017)

All staff should ensure they are aware of and respond to wider safeguarding issues outlined in KCSiE 2022 Annex B, this includes further information on:

- Child abduction and community safety incidents
- Children and the court system
- Children missing from education
- Children with family members in prison
- Child Criminal Exploitation (CCE) and Child Sexual Exploitation (CSE)
- County lines
- Modern Slavery and the National Referral Mechanism
- Cybercrime
- Domestic abuse
- Homelessness
- So-called ‘honour-based’ abuse (including Female Genital Mutilation and Forced Marriage)
- Preventing radicalisation (including the Prevent duty and Channel)
- Child on Child abuse
- Sexual violence and sexual harassment between children in schools and colleges (including Upskirting)

Responses from parents

Research and experience indicates that the following responses from parents may suggest a cause for concern across all four categories:

- An unexpected delay in seeking treatment that is obviously needed
- An unawareness or denial of any injury, pain or loss of function (for example, a fractured limb)
- Incompatible explanations offered, several different explanations or the child is said to have acted in a way that is inappropriate to her/his age and development
- Reluctance to give information or failure to mention other known relevant injuries
- Frequent presentation of minor injuries
- Unrealistic expectations or constant complaints about the child
- Alcohol misuse or other drug/substance misuse
- Parents request removal of the child from home
- Violence between adults in the household

Children with special educational needs and disabilities

When working with children with special educational needs and disabilities, practitioners need to be aware that additional possible indicators of abuse and/or neglect may also include:

- A bruise in a site that might not be of concern on an ambulant child such as the shin, might be of concern on a non-mobile child. The Bradford Partnership have a multi-agency protocol to support professionals in making informed judgements for bruising in non-independently mobile children.
- Not getting enough help with feeding leading to malnourishment
- Poor toileting arrangements
- Lack of stimulation
- Unjustified and/or excessive use of restraint
- Rough handling, extreme behaviour modification e.g. deprivation of liquid medication, food or clothing, disabling wheelchair batteries
- Unwillingness to try to learn a child's means of communication
- Ill-fitting equipment e.g. callipers, sleep boards, inappropriate splinting;
- Misappropriation of a child's finances
- Invasive procedures

Appendix 2 Responding to children who report abuse.

When a child tells me about abuse s/he has suffered, what must I remember?

- Stay calm
- Do not transmit shock, anger or embarrassment.
- Reassure the child. Tell her/him you are pleased that s/he is speaking to you.
- Never enter into a pact of secrecy with the child. Assure her/him that you will try to help but let the child know that you will have to tell other people in order to do this. State who this will be and why.
- Tell her/him that you believe them. Children very rarely lie about abuse; but s/he may have tried to tell others and not been heard or believed.
- Tell the child that it is not her/his fault.
- Encourage the child to talk but do not ask "leading questions" or press for information.
- Listen and remember.
- Check that you have understood correctly what the child is trying to tell you.
- Praise the child for telling you. Communicate that s/he has a right to be safe and protected.
- Do not tell the child that what s/he experienced is dirty, naughty or bad.
- Do not take photographs or make videos of any injuries reported by a child.
- It is inappropriate to make any comments about the alleged offender.
- Be aware that the child may retract what s/he has told you. It is essential to record all you have heard.
- At the end of the conversation, tell the child again who you are going to tell and why that person or those people need to know.
- As soon as you can afterwards, make a detailed record of the conversation using the child's own language. Include any questions you may have asked. Do not add any opinions or interpretations.

NB It is not education staff's role to investigate reports of abuse. Their role is to observe that something may be wrong, ask about it, listen, be available and respond appropriately.

Immediately afterwards

You must not deal with this yourself. All reports of abuse must be recorded and responded to in keeping with the professional roles and responsibilities outlined in Fig 1: Summary of in-school procedures to follow where there are concerns about a child (Page 15)

Appendix 4 Recruitment and Selection Checklist

Post _____

Date _____

Recruitment and selection checklist	Initials	Date
Pre-interview:		
Planning - Timetable decided: job specification and description and other documents to be provided to applicants, reviewed and updated as necessary. Application form seeks all relevant information and includes relevant statements about references etc		
Vacancy advertised (where appropriate) Advertisement includes reference to safeguarding policy, that is, statement of commitment to safeguarding and promoting welfare of children and need for successful applicant to be DBS checked		
Applications on receipt - Scrutinised – any discrepancies/anomalies/gaps in employment noted to explore if candidate considered for short-listing		
Short-list prepared		
References – seeking Sought directly from referee on short-listed candidates; ask recommended specific questions; include statement about liability for accuracy		
References – on receipt Checked against information on application; scrutinised; any discrepancy/issue of concern noted to take up with referee and/or applicant (at interview if possible) (If received by email – accompanying email to verify authenticity. If not from professional email address, follow up to ensure authenticity)		
Invitation to interview - Includes all relevant information and instructions and the self-disclosure form.		
Interview arrangements - At least two interviewers; panel members have authority to appoint; have met and agreed issues and questions/assessment criteria/standards		
Online checks – Exploring any content publicly available online that might compromise their professional role so this can be discussed with candidates at interview		
Interview - Explores applicants' suitability for work with children as well as for the post		
Self-Disclosure – Completed self-disclosure is submitted and seen by the member of the panel who is safer recruitment trained.		
Note: identity and qualifications of successful applicant verified on day of interview by scrutiny of appropriate original documents; copies of documents taken and placed on file; where		

appropriate applicant completed application for DBS disclosure		
Conditional offer of appointment: pre appointment checks. Offer of appointment is made conditional on satisfactory completion of the following pre-appointment checks and, for non-teaching posts, a probationary period		
References before confirmation of appointment: (if not obtained and scrutinised previously) (If received by email – accompanying email to verify authenticity. If not from professional email address, follow up to ensure authenticity)		
Identity (if that could not be verified at interview)		
Qualifications (if not verified on the day of interview)		
Permission to work in UK, if required		
School record sight of DBS certificate - where appropriate satisfactory DBS certificate.		
DBS Barred list check – applicant is not barred from working with Children (this must be completed before the applicant commences work)		
Childcare (Disqualification) Regulations 2009 Letter – for any staff who work in childcare provision or who are directly concerned with the management of such provision as defined in the statutory guidance.		
Health – the candidate is medically fit Medical Pre Employment Questionnaire		
Prohibition from Teaching Work Check – For those carrying out teaching work (see below) the teacher has not been included in the prohibition list or interim prohibition list or has a GTCE sanction.		
Qualified Teacher Status (QTS) Check – (for teaching posts in maintained schools) the teacher has obtained QTS or is exempt from the requirement to hold QTS (for teaching posts in FE colleges) the teacher has obtained a Post Graduate Certificate of Education (PGCE) or Certificate of Education (Cert. Ed) awarded by a higher education institution, or the FE Teaching Certificate conferred by an awarding body		
Overseas Checks – for individuals who have lived or worked abroad in the last 5 years. (For those carrying out teaching work within the EEA area this will include an EEA prohibition order check through Employer Access until Jan 21, after this date it will include a reference from any education employer overseas in the same period)		

Statutory Induction Completed (for teachers who obtained QTS after 7 May 1999 and are not employed as NQTs)		
Risk Assessment – for Volunteers a written Risk assessment in relation to undertaking an Enhanced DBS		
Child Protection & Online safety training and other induction such as H&S, Safe Working Practice / code of staff behaviour, etc Including: Safeguarding & Child Protection Policy Safer Working Practice Guidance Whistleblowing procedures KCSiE Part 1 or Annex and Annexe B ICT Acceptable Use Policy Online Safety Policy & Guidance Children Missing Education Policy Behaviour Policy		

Each of the following activities is teaching work: planning and preparing lessons and courses for pupils, delivering* lessons to pupils; assessing the development, progress and attainment of pupils; and reporting on the development, progress and attainment of pupils.

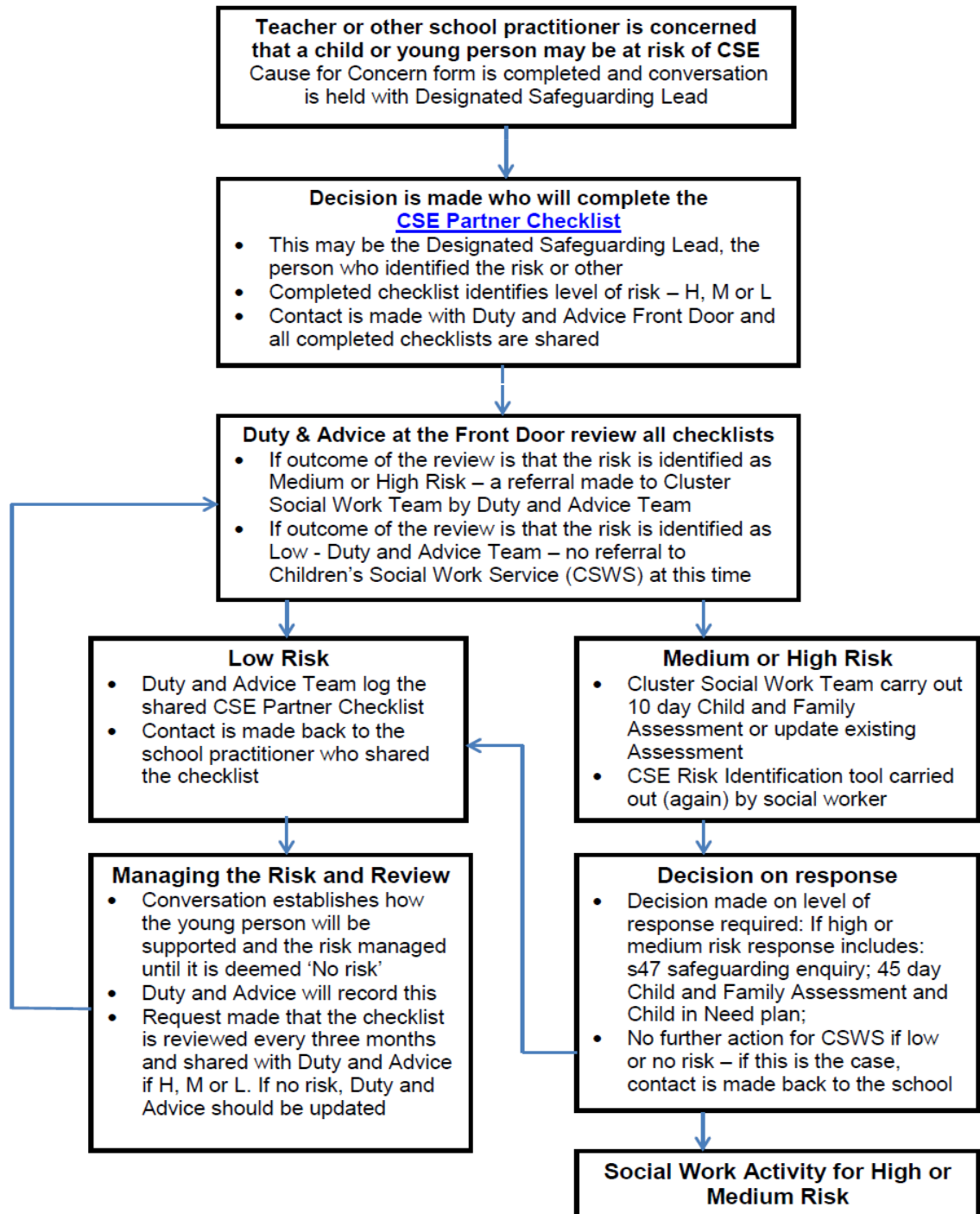
* “delivering” includes delivering lessons through distance learning or computer aided techniques. The activities specified above are not teaching work for the purposes of the Regulations if the person carrying out the activity does so (other than for the purposes of induction) subject to the direction and supervision of a qualified teacher(2) or other person nominated by the head teacher to provide such direction and supervision.

* “delivering” includes delivering lessons through distance learning or computer aided techniques. The activities specified above are not teaching work for the purposes of the Regulations if the person carrying out the activity does so (other than for the purposes of induction) subject to the direction and supervision of a qualified teacher(2) or other person nominated by the head teacher to provide such direction and supervision.

Appendix 5 Child Exploitation Response Checklist

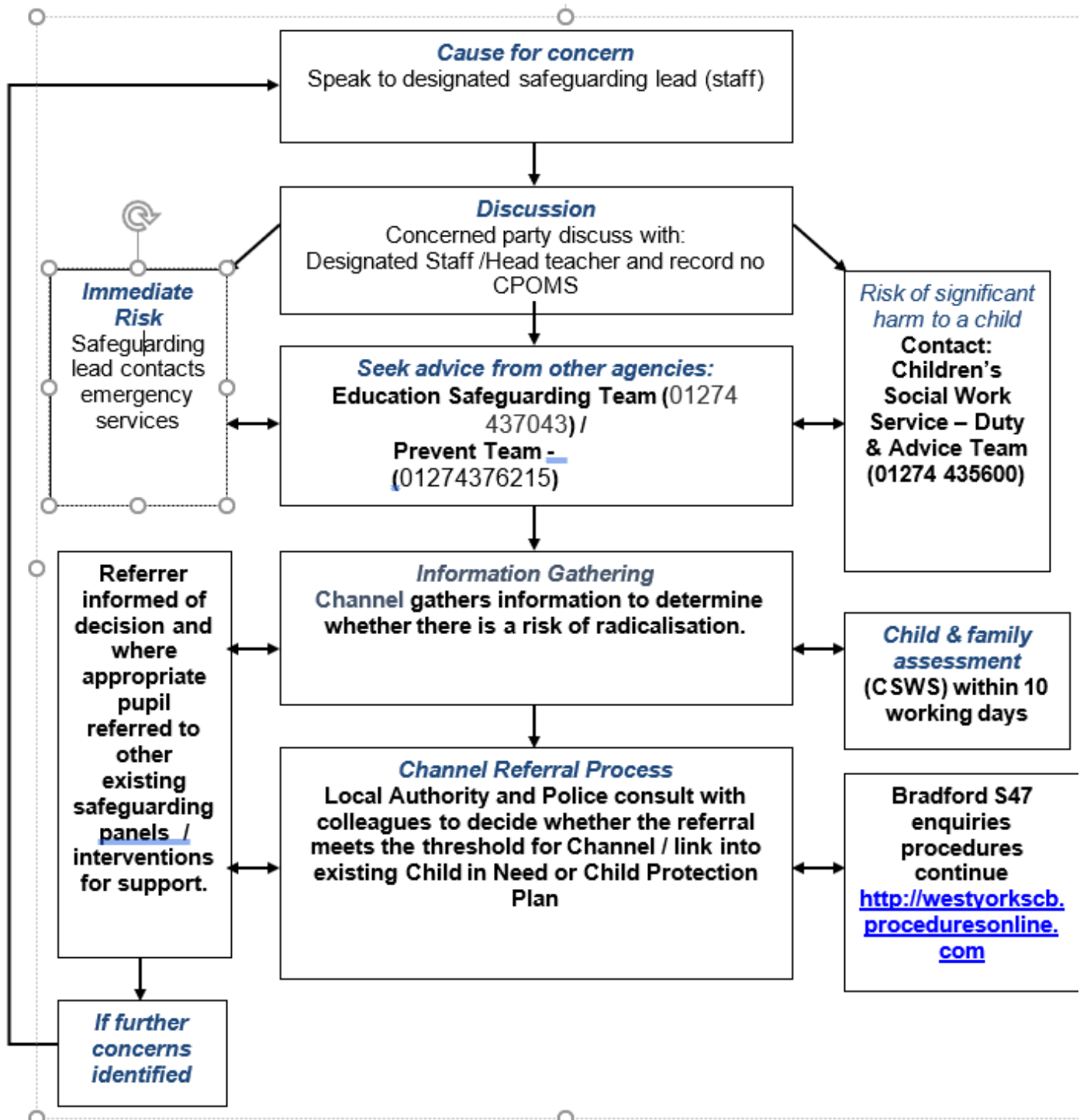
Responding to identified concerns about Child Sexual Exploitation (CSE) in schools

Education professionals can also use the [WY Police CSE information report form](#) on the Leeds LSCB website to share any information which could help identify possible perpetrators of CSE, or children at risk of CSE.



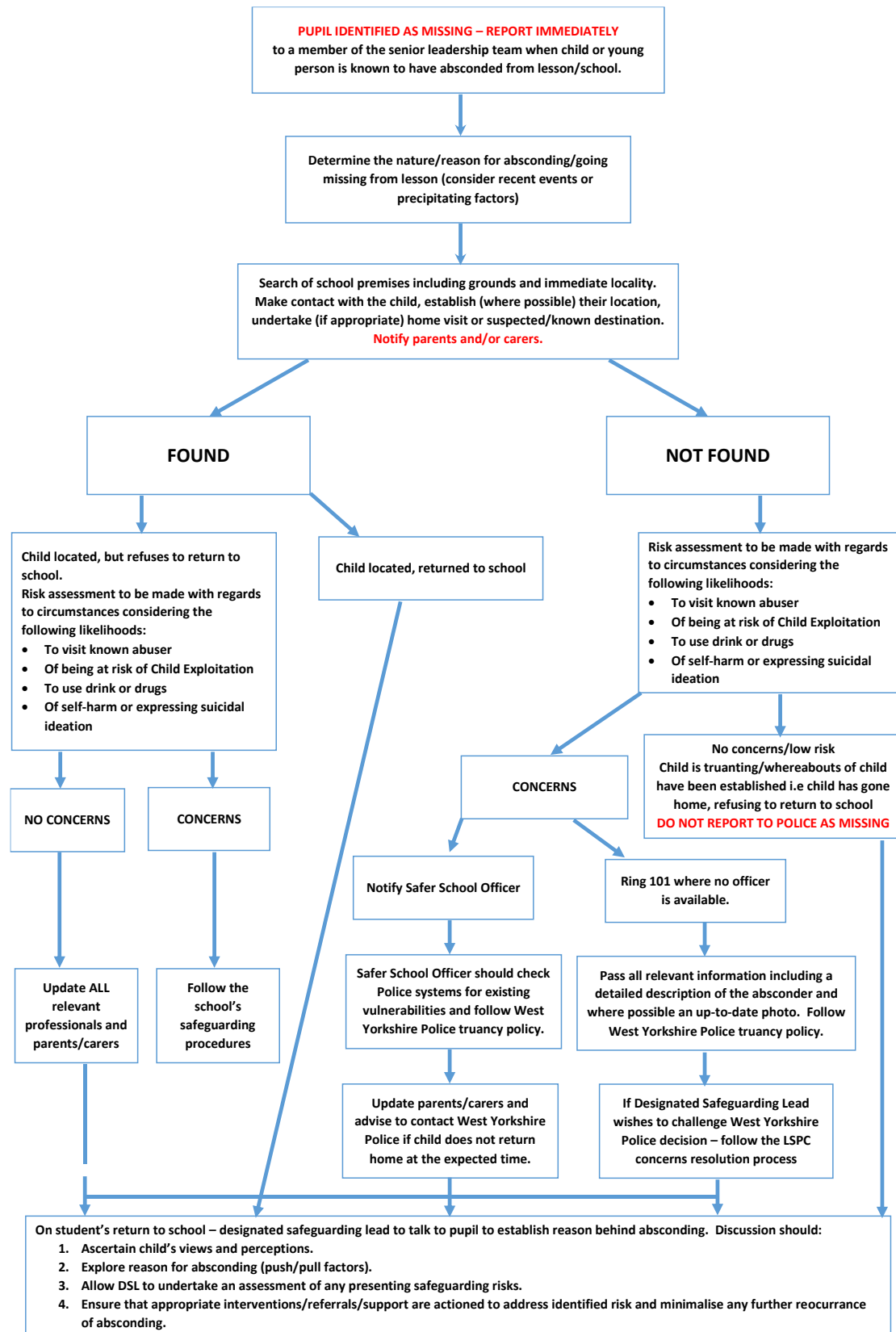
Appendix 6 Radicalisation Response Checklist

Summary of in-school procedures to follow where there are potential radicalisation concerns about a child/member of staff



Appendix 7 Missing from School Response Checklist

Referral pathway for reporting children and young people missing /absconded during the school day



Appendix 8 FE Safeguarding Information Sharing Form

Name			
Date of Birth			
Gender Identity	Male <input type="checkbox"/>	Female <input type="checkbox"/>	Transgender <input type="checkbox"/>
	Non-Binary <input type="checkbox"/>	Genderqueer <input type="checkbox"/>	Gender-fluid <input type="checkbox"/>

Please indicate the nature of the incident or safeguarding issue that you have been concerned about either in the past or currently?

Physical Abuse	<input type="checkbox"/>	Sexual Abuse	<input type="checkbox"/>	Emotional Abuse	<input type="checkbox"/>
Neglect	<input type="checkbox"/>	Mental ill Health	<input type="checkbox"/>	Suicidal intent	<input type="checkbox"/>
Self-Harm	<input type="checkbox"/>	Forced Marriage	<input type="checkbox"/>	Risk to others	<input type="checkbox"/>
Prevent	<input type="checkbox"/>	CSE	<input type="checkbox"/>	Faith Abuse	<input type="checkbox"/>
Financial Abuse	<input type="checkbox"/>	Domestic Violence	<input type="checkbox"/>	Female Genital Mutilation	<input type="checkbox"/>
Fabricated/Induced Illness	<input type="checkbox"/>	Gangs and Youth Violence	<input type="checkbox"/>	Harmful Sexual Behaviour	<input type="checkbox"/>
Institutional abuse	<input type="checkbox"/>	Missing from home	<input type="checkbox"/>	Sexting	<input type="checkbox"/>
Trafficking	<input type="checkbox"/>	Missing in education	<input type="checkbox"/>	Substance abuse	<input type="checkbox"/>
*Child Looked After	<input type="checkbox"/>	COVID-19 related issues	<input type="checkbox"/>		

Other/Additional information(Please State):

--

Are there any current or relevant historical safeguarding concerns?

Please can you provide details of the concerns that you have noted. Please also indicate if the concern was referred to any agencies (i.e. children's social work services, adult social care, police) and the outcome of the referral? Feel free to use additional sheets if required.

Safeguarding Issue	Date	What action was taken / Referred to agency?

Please can you give full details including contact details of which agencies are currently working with the student?

Children's Social Work Services		Adult Social Care	
Probation		Youth Offending Services	
CAMHS		Police	
Other, Please state			

Has the student been subject to a Child in Need Plan, a Child Protection Plan, Early Help Plan, Education Health Care Plan, Personal Education Plan or RAMP (for Harmful Sexual Behaviour) Please give further details about the support they are currently receiving.

--

What areas of support would you recommend the student will need at College?

Additional Learning Support	<input type="checkbox"/>	Life Skills	<input type="checkbox"/>	Family support	<input type="checkbox"/>	Substance Misuse	<input type="checkbox"/>
Risk of offending or re-offending	<input type="checkbox"/>	Financial <i>*CLA are entitled to bursaries and discretionary funding.</i>	<input type="checkbox"/>	Health Advice	<input type="checkbox"/>	Emotional Wellbeing	<input type="checkbox"/>
Basic Skills	<input type="checkbox"/>	Housing	<input type="checkbox"/>	Counselling	<input type="checkbox"/>	Other, please state below	<input type="checkbox"/>
Risk Management Plan	<input type="checkbox"/>	<i>(Please indicate if this is for risk to others, risk to themselves or relating to sexually harmful behaviour)</i>					

Please can you provide further information concerning any recommendations for support?

--

Please can you provide your details below:

Name:	Position:
Organisation:	Tel No:
Email Address:	Date:

CONSENT TO SHARE INFORMATION PRIOR TO ENROLMENT

To be completed by student

I Insert Name give consent for the above information to be shared with Insert name of provider

Date	
Signature of student	

If consent from student has not been sought or you wish the FE provider to contact you directly for further information pertaining to this pupil, please provide a contact name and number of the relevant designated safeguarding lead.

Name of contact	
Telephone number	

Thank you for taking the time to gather the information requested. Please ensure that the completed form is returned securely to the relevant designated safeguarding officer listed below.

Appendix 9 LADO Notification Form



ALLEGATIONS MANAGEMENT REFERRAL TO LOCAL AUTHORITY DESIGNATED OFFICER (To be completed and sent to The Safeguarding & Reviewing Unit within one day of notification of the allegation)
--

DATE OF REFERRAL	
-------------------------	--

<u>PERSON BEING REFERRED</u>			
Name		Date of Birth	
Ethnic Origin			
Home Address			
Workplace Address			
Position of person being referred:		Name of workplace contact person and position (i.e. manager)	
		Contact details	

<u>REFERRED BY</u>			
Name		Position	
Organisation Name		Contact Number	
Organisation Address			

OFFICE USE ONLY (to be completed by CPU): Agency Type: Armed Forces, Cafcass, Connections, Education, Faith Group, Foster Carers, Health, Immigration/Asylum Support Services, NSPCC, Ofsted, Other, Probation, Secure Estate, Voluntary Youth Organisation, YOT

<u>DETAILS OF YOUR ORGANISATION'S DESIGNATED MANAGER FOR ALLEGATIONS MANAGEMENT</u>			
Name		Contact Number	
Has the Employee's Designated Manager been informed?			YES / NO (delete as appropriate)

<u>DETAILS OF CHILD OR CHILDREN INVOLVED</u>			
Name	DOB	Address	Ethnicity
<u>Has the child's parents/ carers been informed?</u>			YES / NO (delete as appropriate)

<u>DOES THE PERSON BEING REFERRED HAVE CHILDREN OF THEIR OWN?</u>			
If yes, please provide the details below			
Name	DOB	Address	Ethnicity
IF THERE WERE OTHER CHILDREN INVOLVED IN THE INCIDENT OR THE PERSON BEING REFERRED HAS OTHER CHILDREN OF THEIR OWN/OTHER CHILDREN LIVING WITH THEM, PLEASE PROVIDE THEIR DETAILS ON ADDITIONAL SHEETS			



<u>DETAILS OF CONCERN BEING REFERRED</u>	
Date concern arose	
<u>DETAILS OF THE CONCERN:</u> (please provide as much factual detail as possible and continue on additional sheets if necessary):	

OFFICE USE ONLY (to be completed by CPU)

Category: Physical / Physical (Own Child) Emotional / Emotional (Own Child)
Neglect / Neglect (Own Child) Sexual / Sexual (Own Child)
Restraint / Other / Not specified

HAVE YOU NOTIFIED ANY OTHER AGENCIES?

If yes, please provide the details below

Name		Position	
Organisation Name		Contract Number	
Name		Position	
Organisation Name		Contract Number	
Name		Position	
Organisation Name		Contract Number	
Name		Position	
Organisation Name		Contract Number	
Name		Position	
Organisation Name		Contract Number	

Once completed, please return to LADO@bradford.gov.uk from a secure e-mail account.

If you do not have a secure e-mail account, please send to the same address of LADO@bradford.gov.uk using a form of secure software such as ~~Galaxkey~~.

**THANK YOU FOR TAKING THE TIME TO COMPLETE AND RETURN THIS FORM. THE
REMAINDER OF THE FORM IS FOR OFFICE USE ONLY AND SHOULD NOT BE COMPLETED BY
THE REFERRING ORGANISATION.**

ONGOING PROCESS AND OUTCOMES (see P5 for options)

Date process started:

Process Category:

Process:

Outcome:

Date Outcome Completed:

Notes:

ONGOING PROCESS AND OUTCOMES (See P5 for options)

Date process started:

Process Category:

Process:

Outcome:

Date Outcome Completed:

Notes:

FINAL OUTCOME OF THE ALLEGATIONS MANAGEMENT REFERRAL:
(Please circle one of the following)

Unfounded

Malicious

Unsubstantiated

Substantiated

Other

Date Received:

Date Concluded:

Signed:

ONGOING PROCESS AND OUTCOME CATEGORIES

OPTIONS

PROCESS CATEGORY	PROCESS	OUTCOME
Barring	Referral to Regulatory Body	Barred
	Referral to DBS	Not Barred
CP	Section 47	CP Conference
		NFA
Criminal	Criminal Investigation	Caution
		Conviction
		Acquittal
Employment	Suspension	Cessation of use
		Deregistered (fostering)
		Resignation
		Verbal warning
		Written warning
		NFA
		Resignation
	Placed on <u>non contact</u> duties	NFA
		Dismissal
	Temporary Relocation	
Ofsted Informed		Yes/No

OFFICE USE ONLY (to be completed by CPU):

Agency Type: Armed Forces, Cafcass, Connections, Education, Faith Group, Foster Carers, Health, Immigration/Asylum Support Services, NSPCC, Ofsted, Other, Probation, Secure Estate, Voluntary Youth Organisation, YOT

DETAILS OF YOUR ORGANISATION'S DESIGNATED MANAGER FOR ALLEGATIONS MANAGEMENT

Name: _____ **Contact Number:** _____

Has the Employee's Designated Manager been informed? YES or NO

Closure of Investigation and Referral (All agency involvement has ceased)

Final outcome of investigation: please circle as appropriate)

Allegation unfounded / Allegation unsubstantiated / Allegation Malicious

Dismissal / Cessation of Use / Disciplinary Procedures / Caution /

Conviction / Acquittal / NFA Professional Advice

Referral to Barring Body (state which) _____

Inclusion on Barring List (state which) _____) /

Referral to

Regulatory Body (state which) _____)

Closure date for referral: _____

Signed: _____

MONITORING ARRANGEMENTS : THE FOLLOWING DATA IS TO BE RECORDED AND PROVIDED TO THE CPU:

OUTCOMES ENDED

DATE STARTED

DATE

NFA Professional Advice.

Suspended

Dismissal

Cessation of Use

Section 47 CA investigation

Criminal investigation

Disciplinary Procedures

Criminal Prosecution

Caution

Conviction

Acquittal

Referral to Barring Board (state Barring Board) _____

Inclusion on Barring List (state Barring List) _____

Referral to Regulatory Body (state Regulatory Body) _____

TO BE COMPLETED BY CPU

Date Received.....

Date Concluded.....

Final Outcome

Appendix 10 Prevent Referral Form

Prevent Referral Form

PREVENT REFERRAL FORM

REFERRAL PROCESS	
<p>By sending this form you consent for it to arrive with both your dedicated Local Authority safeguarding team & Prevent policing team for a joint assessment. Wherever possible we aim to give you feedback on your referral, please be aware, however, that this is not always possible due to data-protection & other case sensitivities.</p> <p>Once you have completed this form, please email it to: intelligence@ctpne.police.uk</p> <p>If you have any questions whilst filling in the form, please call: 01274 474783</p>	
INDIVIDUAL'S BIOGRAPHICAL & CONTACT DETAILS	
Forename(s):	First Name(s)
Surname:	Last Name
Date of Birth (DD/MM/YYYY):	D.O.B.
Approx. Age (if D.O.B. unknown):	Please Enter
Gender:	Please Describe
Known Address(es):	Identify which address is the Individual's current residence
Nationality / Citizenship:	Stated nationality / citizenship documentation (if any)
Immigration / Asylum Status:	Immigration status? Refugee status? Asylum claimant? Please describe.
Primary Language:	Does the Individual speak / understand English? What is the Individual's first language?
Contact Number(s):	Telephone Number(s)
Email Address(es):	Email Address(es)
Any Other Family Details:	Family makeup? Who lives with the Individual? Anything relevant.
DESCRIBE CONCERNS	In as much detail as possible, please describe the specific concern(s) relevant to Prevent.
Please Describe	
<p>FOR EXAMPLE:</p> <ul style="list-style-type: none"> How / why did the Individual come to your organisation's notice in this instance? Does it involve a specific event? What happened? Is it a combination of factors? Describe them. Has the Individual discussed personal travel plans to a warzone or countries with similar concerns? Where? When? How? Does the Individual have contact with groups or individuals that cause you concern? Who? Why are they concerning? How frequent is this contact? Is there something about the Individual's mobile phone, internet or social media use that is worrying to you? What exactly? How do you have access to this information? Has the Individual expressed a desire to cause physical harm, or threatened anyone with violence? Who? When? Can you remember what was said / expressed exactly? Has the Individual shown a concerning interest in hate crimes, or extremists, or terrorism? Consider any extremist ideology, group or cause, as well as support for "school-shooters" or public-massacres, or murders of public figures. Please describe any other concerns you may have that are not mentioned here. 	
COMPLEX NEEDS	Is there anything in the Individual's life that you think might be affecting their wellbeing or that might be making them vulnerable in any sense?
Please Describe	
<p>FOR EXAMPLE:</p> <ul style="list-style-type: none"> Victim of crime, abuse or bullying. Work, financial or housing problems. Citizenship, asylum or immigration issues. Personal problems, emotional difficulties, relationship problems, family issues, ongoing court proceedings. On probation; any erratic, violent, self-destructive or risky behaviours, or alcohol / drug misuse or dependency. Expressed feelings of injustice or grievance involving any racial, religious or political issue, or even conspiracy theories. Educational issues, developmental or behavioural difficulties, mental ill health (see Safeguarding Considerations below). Please describe any other need or potential vulnerability you think may be present but which is not mentioned here. 	
OTHER INFORMATION	Please provide any further information you think may be relevant, e.g. social media details, military service number, other agencies or professionals working with the Individual, etc..
Please Describe	

PREVENT REFERRAL FORM

PERSON WHO FIRST IDENTIFIED THE CONCERNS	
Do they wish to remain anonymous?	Yes / No
Forename:	Referrers First Name(s)
Surname:	Referrers Last Name
Professional Role & Organisation:	Referrers Role / Organisation
Relationship to Individual:	Referrers Relationship To The Individual
Contact Telephone Number:	Referrers Telephone Number
Email Address:	Referrers Email Address
PERSON MAKING THIS REFERRAL (if different from above)	
Forename:	Contact First Name(s)
Surname:	Contact Last Name
Professional Role & Organisation:	Contact Role & Organisation
Relationship to Individual:	Contact Relationship to the Individual
Contact Telephone Number:	Contact Telephone Number
Email Address:	Contact Email Address
REFERRER'S ORGANISATIONAL PREVENT CONTACT (if different from above)	
Forename:	Referrers First Name(s)
Surname:	Referrers Last Name
Professional Role & Organisation:	Referrers Role / Organisation
Relationship to Individual:	Referrers Relationship To The Individual
Contact Telephone Number:	Referrers Telephone Number
Email Address:	Referrers Email Address

RELEVANT DATES	
Date the concern first came to light:	When were the concerns first identified?
Date referral made to Prevent:	Date this form was completed & sent off?

SAFEGUARDING CONSIDERATIONS	
Does the Individual have any stated or diagnosed disabilities, disorders or mental health issues?	Yes / No
Please describe, stating whether the concern has been diagnosed.	
Have you discussed this Individual with your organisations Safeguarding / Prevent lead?	Yes / No
What was the result of the discussion?	
Have you informed the Individual that you are making this referral?	Yes / No
What was the response?	
Have you taken any direct action with the Individual since receiving this information?	Yes / No
What was the action & the result?	
Have you discussed your concerns around the Individual with any other agencies?	Yes / No
What was the result of the discussion?	

INDIVIDUAL'S EMPLOYMENT / EDUCATION DETAILS	
Current Occupation & Employer:	Current Occupation(s) & Employer(s)
Previous Occupation(s) & Employer(s):	Previous Occupation(s) & Employer(s)
Current School / College / University:	Current Educational Establishment(s)
Previous School / College / University:	Previous Educational Establishment(s)

PREVENT REFERRAL FORM

THANK YOU

Thank you for taking the time to make this referral. Information you provide is valuable and will always be assessed. If there is no Prevent concern but other safeguarding issues are present, this information will be sent to the relevant team or agency to provide the correct support for the individual(s) concerned.

West Yorkshire Prevent Contacts

BRADFORD DISTRICT

DS Ian Mitchell – 01274 474783 or 07590358027

DC 5762 Matthew Tarrant - 01274 474783 or 07850652096

DC 446 Lauren Royston – 01274 474783 or 07793218543

DC 2557 Dan Pitt – 01274 474783 or 07590357036

PSO Kevin Taylor - 01274 474783 or 07701294731

Bradford Prevent Office – 01274 376041/474783/376116