



Welcome back!  
September 2022



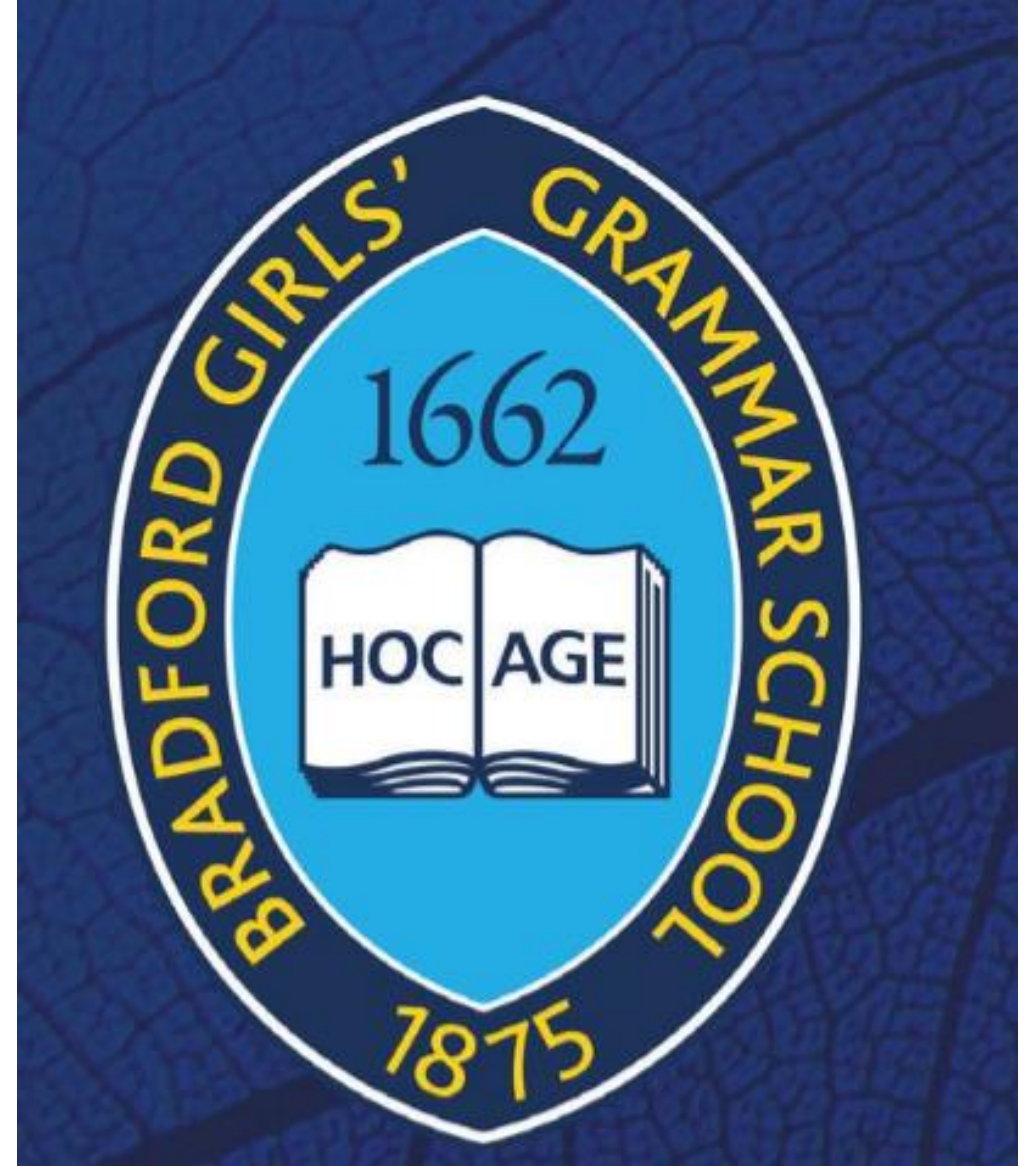
WELCOME TO

# BRADFORD GIRLS' GRAMMAR SCHOOL

*Witamy Vitajte Bienvenue Bienvenidas*

ਮਦਰਾਸ ਹੈ ਅਹਲਾ بك خوش آمدید

ברוך הבא פֿע סוואגלען به را غلاست



# Aims of this session

- Reminder about ASPIRE Values
- Reminder of lines of communication
- Inform you about what your child will be learning this term
- Inform you about PSHE content for the Autumn Term
- Homework expectations
- Parental engagement opportunities
- Any other information
- Questions

Strong Values  
guide our  
actions



# High Expectations

Students  
should **LEAD**  
their learning

## Listen

During **registration** and **teacher explanation**.  
When other students are **feeding back** to the class,  
**answering** a question or **presenting** their work.

## Equipment

**Planner, Calculator, Pencil case** and contents,  
subject specific equipment, text books,  
exercise/sketch books, homework...  
and a **positive attitude**.



## Ask

**Questions**  
For **support**  
For **extension** activities

## Deliver

**High quality, well presented work**  
During the 15-20 minute period of **independent**  
**silent**, but **supported** **working** in **every lesson**



## **Principal**

Mrs Martin



## **Head of Lady Royd**

Mrs Poole



## **Assistant Head SEND, Behaviour, Attendance and Safeguarding,**

Mrs Leary



## **Assistant Head Curriculum and T & L**

Mr Wood



## **EYFS Leader**

Miss Khan



## **KS1 Leader**

Miss Hanson



## **KS2 Leader (L classes)**

Ms Heathcote

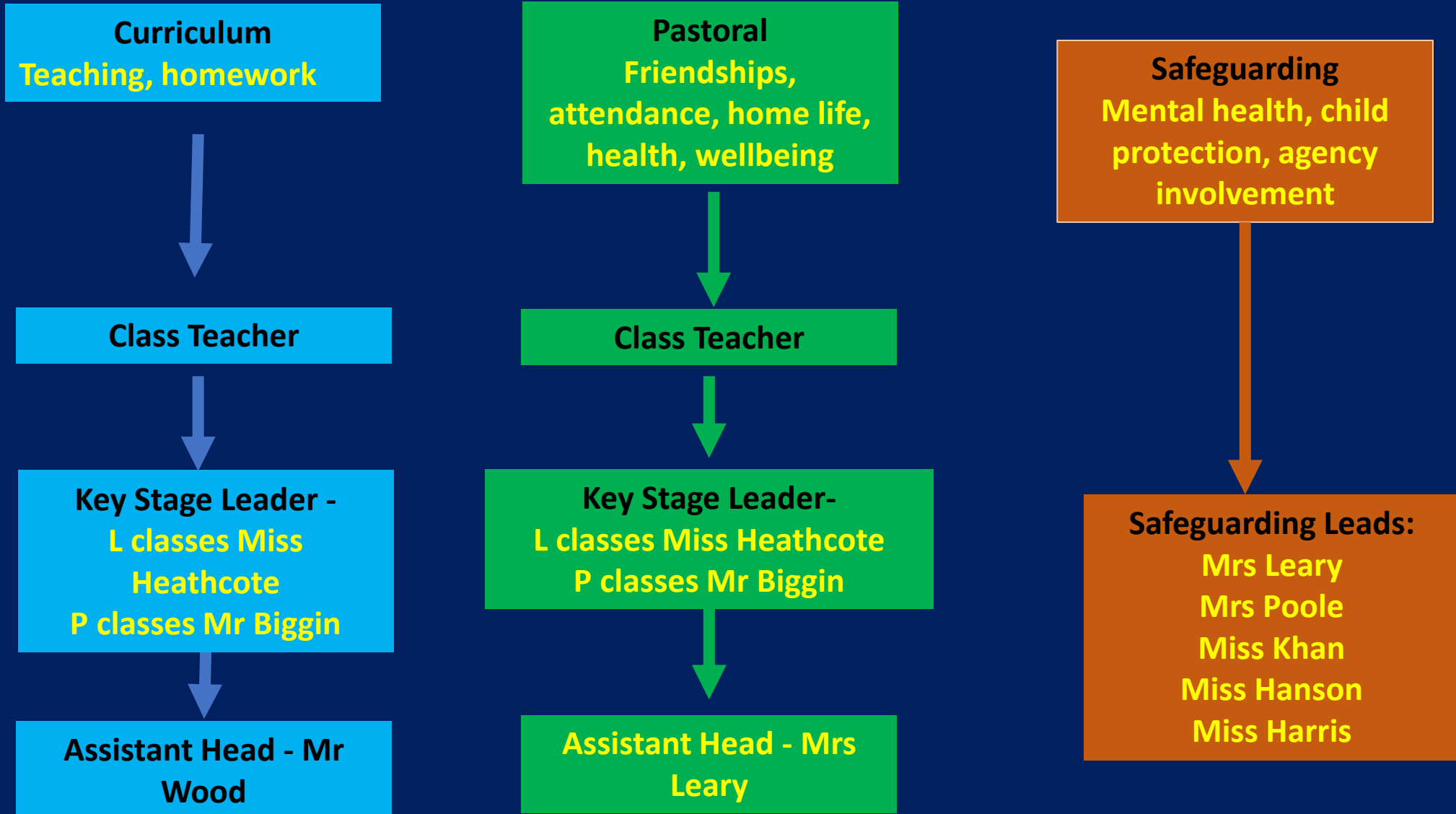


## **KS2 Leader (P classes)**

Mr Biggin

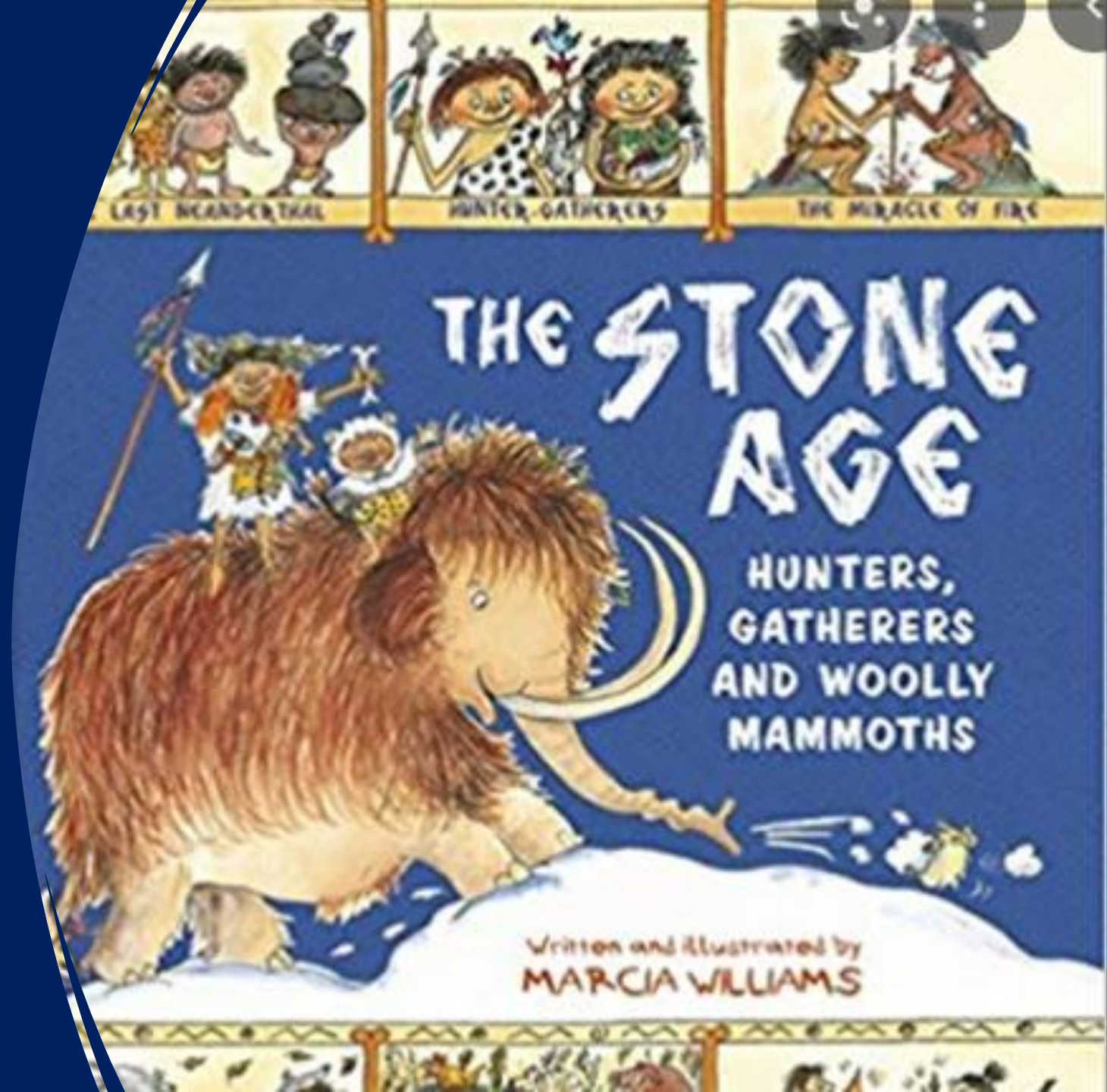


# Who to contact



# Topic

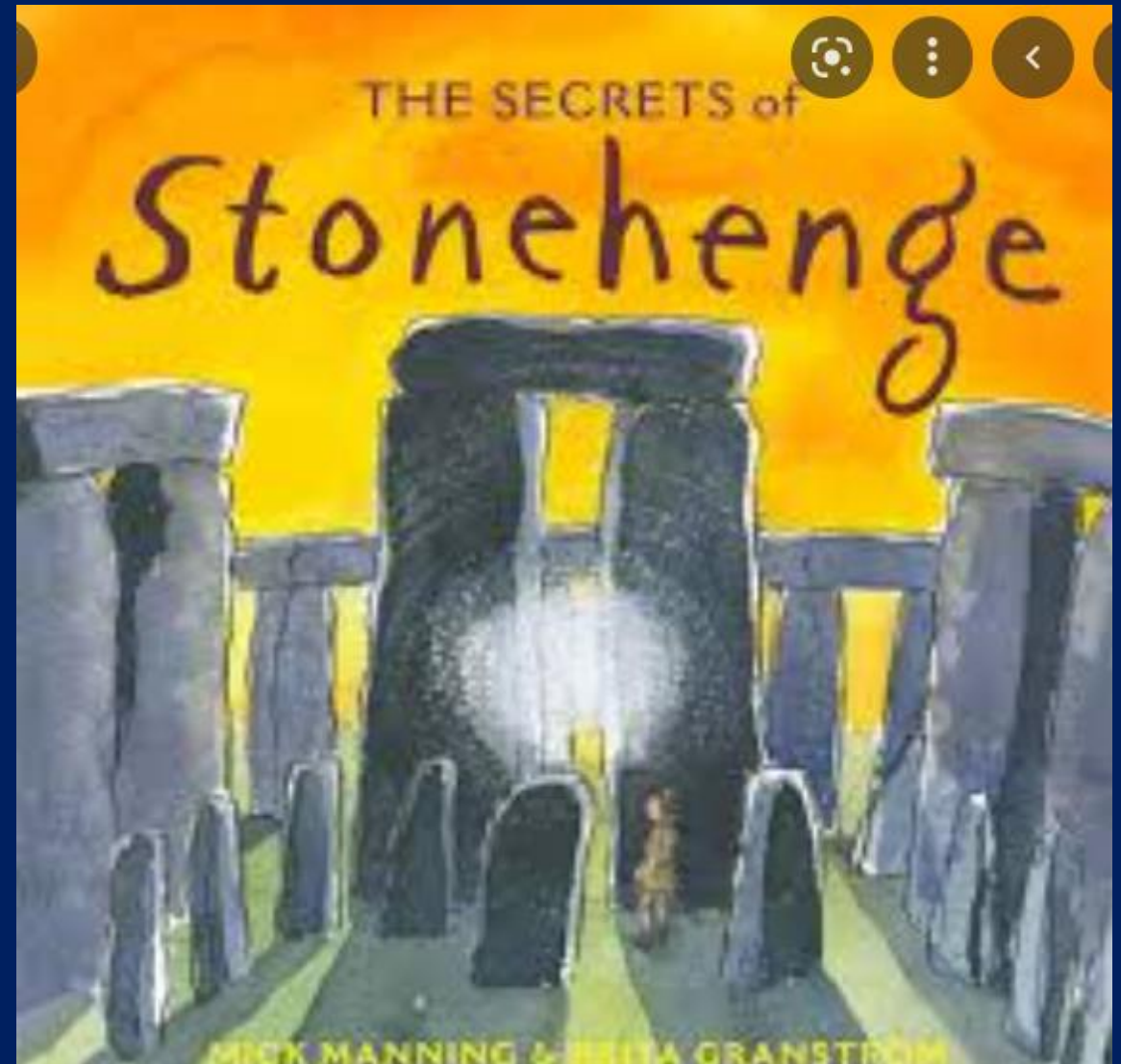
- Our enquiry question for this half term is 'Was prehistoric Britain a peaceful place?'
- Topic for this half term is Stone-Age to Iron Age.





# English Autumn 1

- In English, we will be looking at poetry, Information texts and newspaper reports
- SPaG lessons will focus on their weekly spellings and conjunctions (time and cause) and determiners (a or an)
- Our focus book for reading lessons will be The secrets of Stonehenge.



# English Autumn 2

- In English we will be looking at narrative (alternative ending letters) and poetry (performance).
- In SPaG lessons we will look at adverbs.
- In reading lessons our focus book will be Charlie and the Chocolate Factory.



# Maths

- In Maths we will be focussing on place value, addition and subtraction and multiplication and division throughout the autumn term.
- Particularly the 3, 4 and 8 timetables- please practice on timetables rockstars!!

# Rocks and Soils

## Science

- This half term we will be learning about rocks and soils.
- Looking at the three different types of rocks





# 3P PE

- In PE the children will be doing Games and gymnastics.
- We will be having swimming next half term after the October holidays.
- We have a 2 week timetable
- Week A - Tuesday and Wednesday
- Week B - Wednesday and Friday

For swimming:

- Swimming shorts/ costume- school colours where possible (blue or black)
  - Towel
  - Girls will need a swim cap
- 
- To be excused from PE a signed note from home is required. For any long term excusion from PE, a doctors note is required.

# 3L PE

- In PE the children will be doing Games and swimming.
- We have a 2 week timetable
- Week A - Tuesday and Wednesday (**SWIMMING TUESDAY**)
- Week B - Wednesday and Friday (**SWIMMING FRIDAY**)
- To be excused from PE a signed note from home is required. For any long term exusing from PE, a doctors note is required.



# French

- This term in French we will begin with looking at greeting and how to introduce yourself.
- In autumn 2 we will move onto French games and songs and how to answer simple questions.

# PSHE Autumn 1- Being Me in My World

		Learning Objective
Lesson 1	Help others to feel welcome Getting to Know Each Other	I recognise my worth and can identify positive things about myself and my achievements. I can set personal goals
Lesson 2	Try to make our school community a better place Our Nightmare School	I can face new challenges positively, make responsible choices and ask for help when I need it
Lesson 3	Think about everyone's right to learn Our Dream School	I understand why rules are needed and how they relate to rights and responsibilities
Lesson 4	Care about other people's feelings Rewards and Consequences	I understand that my actions affect myself and others and I care about other people's feelings
Lesson 5	Work well with others Our Learning Charter	I can make responsible choices and take action
Lesson 6	Choose to follow the Learning Charter Owning our Learning Charter	I understand my actions affect others and try to see things from their points of view

# PSHE Autumn 2 – Celebrating Differences

		Learning Objective
Lesson 1	Accept that everyone is different. Families	I understand that everybody's family is different and important to them.
Lesson 2	Include others when working and playing. Family conflict	I understand that differences and conflicts sometimes happen among family members.
Lesson 3	Know how to help if someone is being bullied. Witness and feelings	I know what it means to witness bullying and I know some ways to help.
Lesson 4	Try to solve problems. Witness and solutions	I know that witnesses can make solutions better or worse by what they do.
Lesson 5	Try to use kind words. Words that harm	I recognise that some words are used in hurtful ways.
Lesson 6	Know how to give and receive compliments. Celebrating difference: compliments	I can tell you about a time when my words affected someone's feelings and what the consequences were.



# Parental engagement opportunities Autumn

- Parents evening- Tuesday 11<sup>th</sup> and Thursday 13<sup>th</sup> October
- Curriculum showcase- Friday 21<sup>st</sup> October

# Homework

**Reading at home** - Year 3 visit the library every 2 weeks and select a new book. They should be taking their chosen book home every night to read. Their reading records contain questions that someone at home can ask them after they have read a small section. This Also needs to be updated on the 'Go Read App'. Children will also have a class reading book to take home. All the books in the class reading corner are age related so they can choose which ever book they would like to read. Chn can only change a book when they bring it back from home.

**Timetables** - Please ensure your child practices 10 minutes each day.


**Spellings** - Children will focus on ten words a week, which can be accessed through Spelling Shed.

Topic- follow ideas on homework menu- 1 piece per half term minimum.

# Any other information

- Access your reading book

## Login



Please select your user type.

Students

Teachers

Parents


Class or student username

Password


Login

[Help](#)[Forgotten my login](#)

OxfordOWL



We will be carrying out maintenance work on Wednesday, 15 between 7:00am and 10:00am (GMT). You won't be able to access Owl during this time. We are sorry for any inconvenience caused.



### Oxford Owl for School

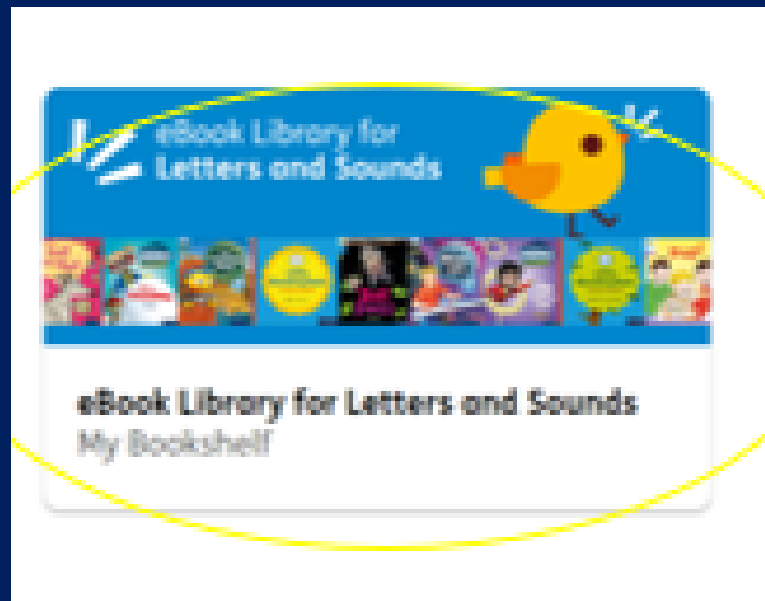
Teaching resources and expert school improvement support

- Award-winning subscriptions and leadership support
- Professional Development and best practice advice
- Free teaching resources and eBooks

Log in

Join us

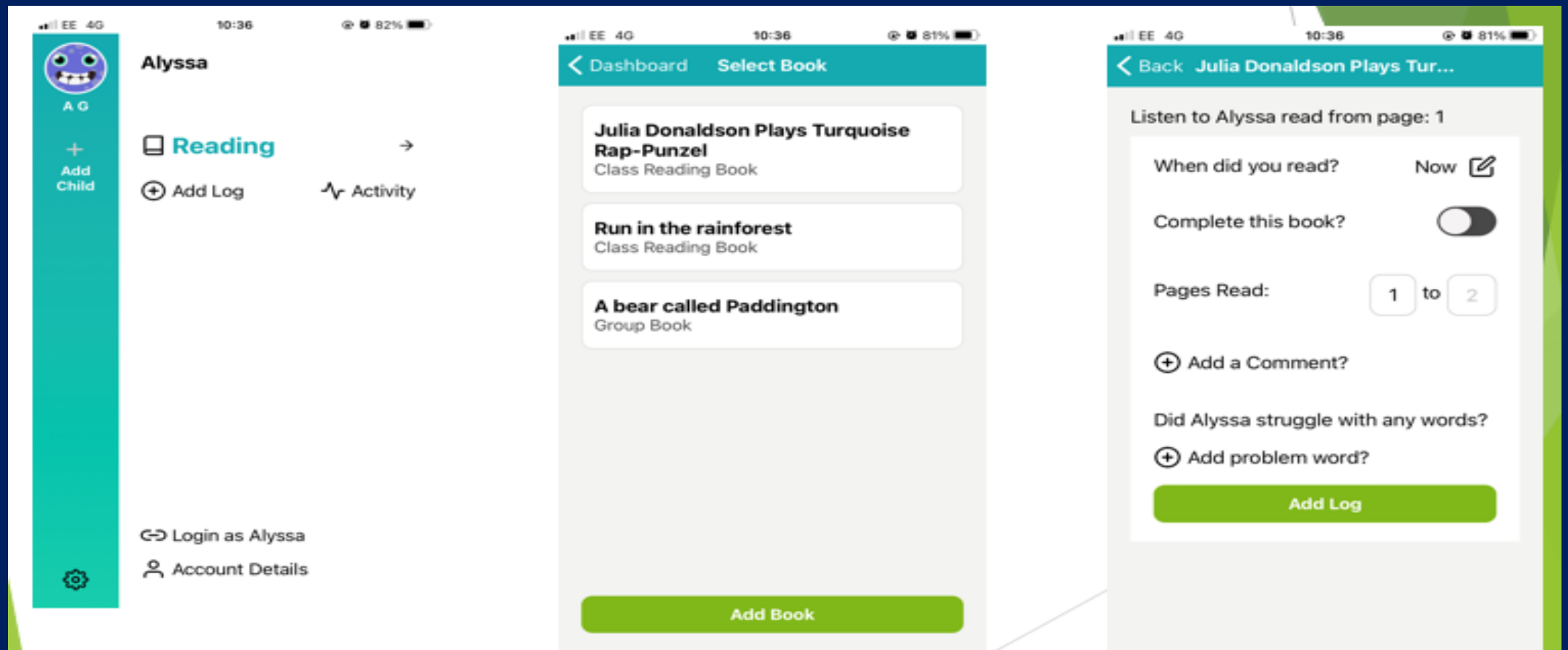
[About Oxford Owl for School](#)





# Any other information

- Log your reading on the go read app.



# Further information and reminders

- Correct school uniform
- Equipment such as glasses, water bottles, coats etc. are all necessary for every day.
- End of the school day- please be patient as your child needs to be checked off of a list to ensure safe home times!

Any Questions?