



ASPIRE • SUCCEED • LEAD

**BRADFORD GIRLS'
GRAMMAR SCHOOL**

Co-educational up to 11, Girls only 11-16

GCSE ENGLISH PARENT WORKSHOP Years 10 & 11

A guide to supporting your
daughter's learning at home



Meet the English Department

Mrs Hughes, Director of English & Senior Leader

nhughes@bggs.com

Mrs Salma Shaheen, Assistant Curriculum Leader

sshaheen1@bggs.com

Mr Baxter , Teacher of English & Responsibility for KS3

abaxter@bggs.com

Ms Morrison Teacher of English

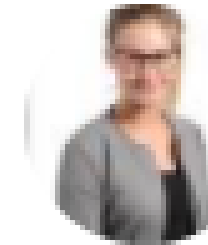
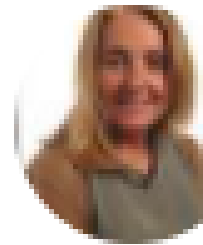
cmorrison@bggs.com

Mrs Nicholson Teacher of English

anicholson@bggs.com

Mrs Webster, Teacher of English & Year Leader 8 and 9

gwebster@bggs.com



Our Vision - English

At Bradford Girls' Grammar School, we believe that strong language and literacy skills are at the centre of all learning. A high-quality education in English will teach pupils to speak and write fluently and through reading and listening, they can communicate with their peers and others. The aim for English is to promote high standards of language and literacy by equipping pupils with a strong command of the spoken and written word and to develop their love of literature through widespread reading for enjoyment. We challenge students to become critical thinkers by being exposed to a range of ambitious text choices and empower them through language to become articulate, confident and open-minded individuals. We believe that English is especially positioned to develop students culturally, emotionally and spiritually in order for them to make a positive contribution to the wider community.





English KS4 Course AQA English Literature and English Language



Your daughter will receive two qualifications in English: an English Language GCSE and an English Literature GCSE. English Language remains the same for both Yr 10 and Yr11. However, this year's Literature GCSE has changed because of the impact of Coronavirus. There is not a foundation and higher paper for either Language or Literature

English Language GCSE

Assessments

All texts in the examination will be unseen.

Paper 1: Explorations in Creative Reading and Writing
What's assessed Section A: Reading <ul style="list-style-type: none">one literature fiction text Section B: Writing <ul style="list-style-type: none">descriptive or narrative writing
Assessed <ul style="list-style-type: none">written exam: 1 hour 45 minutes80 marks50% of GCSE
Questions Reading (40 marks) (25%) – one single text <ul style="list-style-type: none">1 short form question (1 x 4 marks)2 longer form questions (2 x 8 marks)1 extended question (1 x 20 marks) Writing (40 marks) (25%) <ul style="list-style-type: none">1 extended writing question (24 marks for content, 16 marks for technical accuracy)



Paper 2: Writers' Viewpoints and Perspectives

What's assessed

Section A: Reading

- one non-fiction text and one literary non-fiction text

Section B: Writing

- writing to present a viewpoint

Assessed

- written exam: 1 hour 45 minutes
- 80 marks
- 50% of GCSE

Questions

Reading (40 marks) (25%) – two linked texts

- 1 short form question (1 x 4 marks)
- 2 longer form questions (1 x 8, 1 x 12 marks)
- 1 extended question (1 x 16 marks)

Writing (40 marks) (25%)

- 1 extended writing question (24 marks for content, 16 marks for technical accuracy)



Non-examination Assessment: Spoken Language

What's assessed

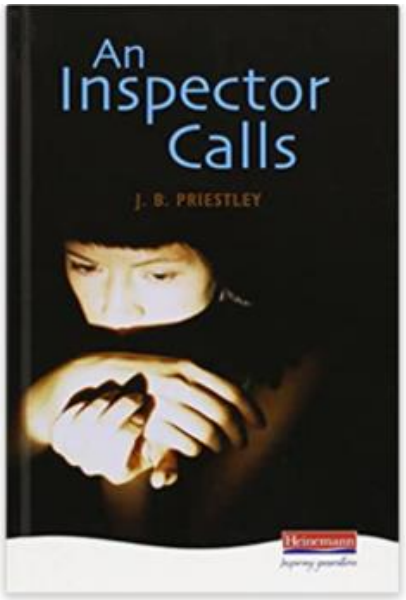
(AO7–AO9)

- presenting
- responding to questions and feedback
- use of Standard English

Assessed

- teacher set throughout course
- marked by teacher
- separate endorsement (0% weighting of GCSE)

Year 10 2021-2



Paper 2 Literature
An Inspector Calls

Paper 2: Writer's viewpoints
and perspectives
1 hour 45 mins
50%

- Reading – 40 marks 15 mins read and plan
- 1. Select four... 4 marks 5 mins
 - 2. Comprehension 8 marks 8 mins
 - 3. Language 12 marks 12 mins
 - 4. Compare 16 marks 20 mins
- Writing – 40 marks
- 5. Write in a viewpoint 24 content 45 mins 16 accuracy

Paper 2 Language Reading and
Writing Skills

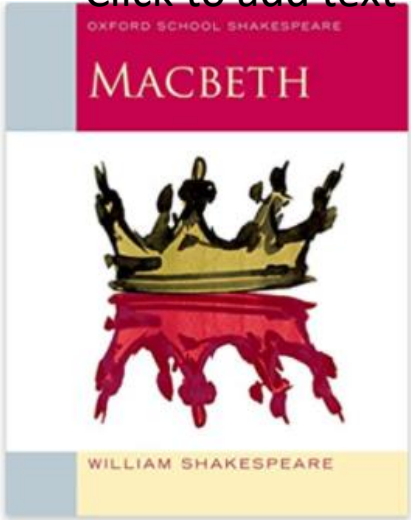


Literature Paper2
Poetry Anthology

Paper 1: Explorations in creative
reading and writing
1 hour 45 mins
50%

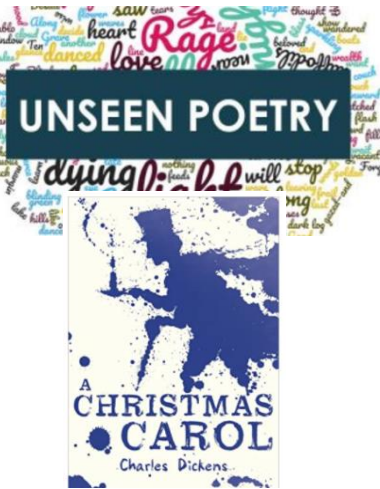
- Reading – 40 marks 15 mins read and plan
- 1. Find four... 4 marks 5 mins
 - 2. Language 8 marks 10 mins
 - 3. Structure 8 marks 10 mins
 - 4. Evaluate 20 marks 20 mins
- Writing – 40 marks
- 5. Describe or narrate : choice from two questions 24 content 45 mins 16 accuracy

Language Paper 1 Reading and
Writing skills



Literature Paper 1 Macbeth

Year 11 Topics left to cover



GCSE
ENGLISH LITERATURE
(8702)

Past and present:
poetry anthology

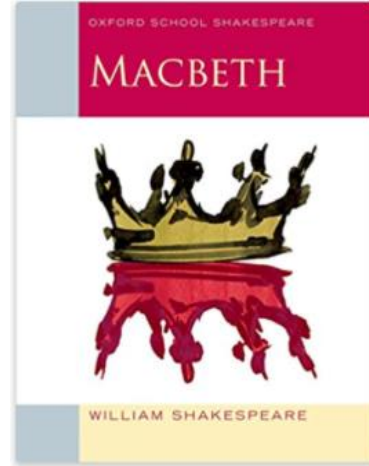


Literature Paper 2 Anthology
Dropped as component after AQA
announcement in October

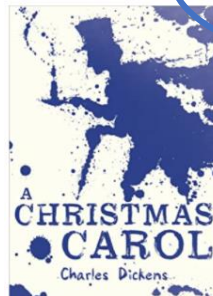


Revision based on areas of
weakness in Mocks

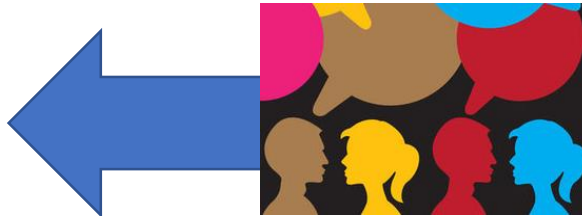
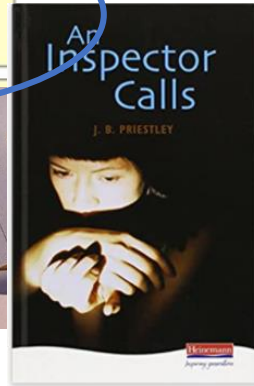
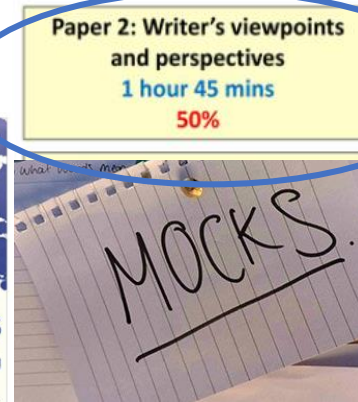
Year 11 2021-2



Literature Paper 2
Macbeth



Spring Mocks
Paper 1 Literature An Inspector Calls
and A Christmas Carol
Paper 2 Language



Paper 1: Explorations in creative
reading and writing
1 hour 45 mins
50%

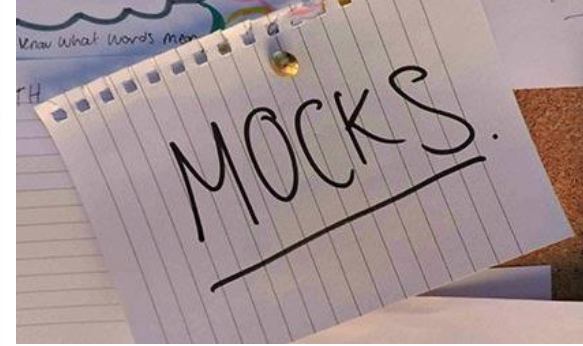
Reading – 40 marks 15 mins read
and plan

1. Find four... 4 marks 5 mins
2. Language 8 marks 10 mins
3. Structure 8 marks 10 mins
4. Evaluate 20 marks 20 mins

Writing – 40 marks

5. Describe or narrate : choice from two
questions 24 content 45 mins
16 accuracy

Paper 1 Language



December Mocks New
Literature Paper 2
Macbeth and Unseen
Poetry
Language Paper 1



Spoken Language assessment & Revision
based on areas of weakness in December
Mocks and preparation for Spring Mocks

Year 10-11 2021-3

English Literature GCSE

Year 11 2021-2

All assessments are closed book: any stimulus materials required will be provided as part of the assessment.

All assessments are compulsory.

Paper 1: Shakespeare and the 19th-century novel
What's assessed <ul style="list-style-type: none"> • Shakespeare plays (page 11) • The 19th-century novel (page 11)
How it's assessed <ul style="list-style-type: none"> • written exam: 1 hour 45 minutes • 64 marks • 40% of GCSE
Questions <p>Section A Shakespeare: students will answer one question on their play of choice. They will be required to write in detail about an extract from the play and then to write about the play as a whole.</p> <p>Section B The 19th-century novel: students will answer one question on their novel of choice. They will be required to write in detail about an extract from the novel and then to write about the novel as a whole.</p>



Paper 2: Modern texts and poetry
What's assessed <ul style="list-style-type: none"> • Modern prose or drama texts (page 11) • The poetry anthology (page 12) • Unseen poetry (page 12)
How it's assessed <ul style="list-style-type: none"> • written exam: 2 hour 15 minutes • 96 marks • 60% of GCSE
Questions <p>Section A Modern texts: students will answer one essay question from a choice of two on their studied modern prose or drama text.</p> <p>Section B Poetry: students will answer one comparative question on one named poem printed on the paper and one other poem from their chosen anthology cluster.</p> <p>Section C Unseen poetry: Students will answer one question on one unseen poem and one question comparing this poem with a second unseen poem.</p>

Changes to exam structure

Because of the new options, we've updated how the two exam papers will be structured.

Paper 1 (choose any two)	Paper 2 (compulsory)
Paper 1P Anthology of poetry – 1 item 30 marks (AO1, AO2, AO3)	Section A Shakespeare – 1 item 30 marks (AO1, AO2, AO3) + 4 marks (AO4)
Paper 1N 19th-century novel – 1 item 30 marks (AO1, AO2, AO3)	Section B Part 1: unseen poem essay 24 marks (AO1, AO2) + 4 marks (AO4) Part 2: unseen poetry comparison 8 marks (AO2)
Paper 1M Modern prose/drama – 1 item 30 marks (AO1, AO2, AO3)	

Information Retrieval practice in Literature Quote Books

Support at home by testing your daughter on Key quotes.



As starters students will be revising texts they have already studied. Whilst the teacher takes the register students write down a key quote and annotate around it. Research shows returning to key information regularly 'makes it stick'

Year 10 are studying Language Paper 2 but starters are from An Inspector Calls


Year 11 are studying Macbeth and Language Paper 1 but starters are from A Christmas Carol

Language A02

Structure A02

'lighting should be pink and intimate until the Inspector arrives, and then it should be brighter and harder'

Effect on reader A02




Context A03

Language A02

Structure A02

Solitary as an oyster

Effect on reader A02



Context A03

How to revise for GCSE English Language

Often students think because the texts for the Language exams are unseen, they can't revise for Language. This isn't true!

Students need to know exactly what skills each question is asking them to demonstrate and how long to spend on each question.

Practice is key to success!

AQA Past papers and mark schemes can be found on the AQA website

<https://www.aqa.org.uk/subjects/english/gcse/english-language-8700/assessment-resources>

Useful Websites and links for GCSE English Language and Literature

Here's a handy 17-page PDF guide that takes you through each of the questions on both papers. [https://studywise.co.uk/wp-content/uploads/GCSE English Language Papers 1 and 2 Revision Guide.pdf](https://studywise.co.uk/wp-content/uploads/GCSE%20English%20Language%20Papers%201%20and%202%20Revision%20Guide.pdf)

One of the benefits of BBC Bitesize is the wealth of high-quality videos, which can be a great means of digesting information rather than students trying to cram in every note they've made, work they've done and handout they've been given Language <https://www.bbc.co.uk/bitesize/examspecs/zcbchv4>
Literature <https://www.bbc.co.uk/bitesize/examspecs/zxqncwx>

Mr Bruff's YouTube channel is useful for Language and Literature <https://www.youtube.com/channel/UCM2vdqz-7e4HAuzhpFuRY8w>. There are also worksheets to use as you are watching the videos <https://mrbruff.com/worksheets/>

Quizlet allows you to create your own flashcards or customise study sets already created. You can revise and use game mode to make things more interesting <https://quizlet.com>

Useful Websites and links for GCSE English Language and Literature

The Oak Academy has excellent interactive teacher led videos to help revise key texts

<https://classroom.thenational.academy/units/revisiting-a-christmas-carol-2c27>

<https://classroom.thenational.academy/units/revisiting-macbeth-91c7>

<https://classroom.thenational.academy/units/revisiting-an-inspector-calls-d1f4>

<https://classroom.thenational.academy/units/language-skills-fiction-reading-52>

<https://classroom.thenational.academy/units/language-skills-fiction-writing-53fd>

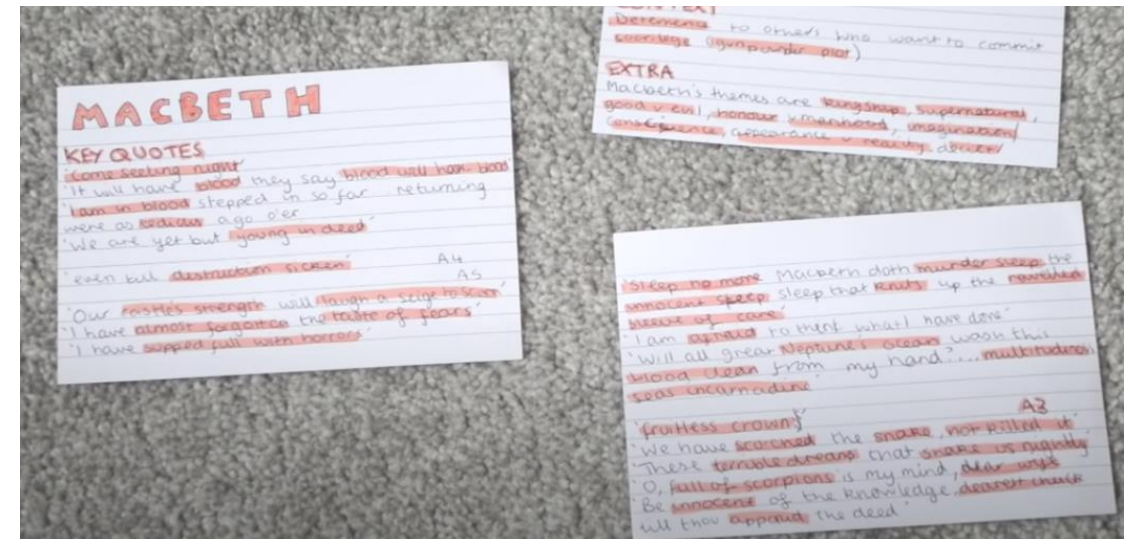
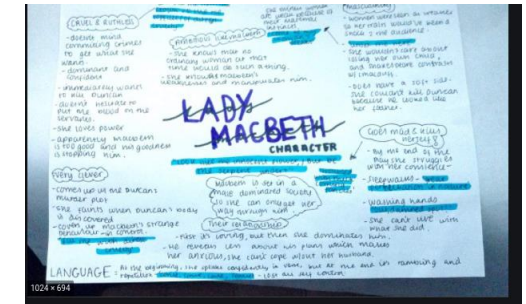
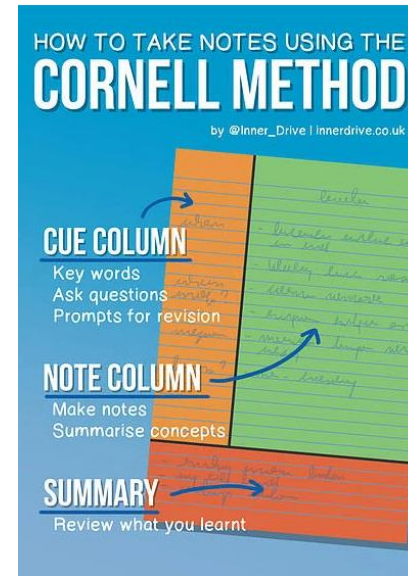
<https://classroom.thenational.academy/units/language-skills-non-fiction-reading-665d>

<https://classroom.thenational.academy/units/language-skills-non-fiction-writing-88fc>

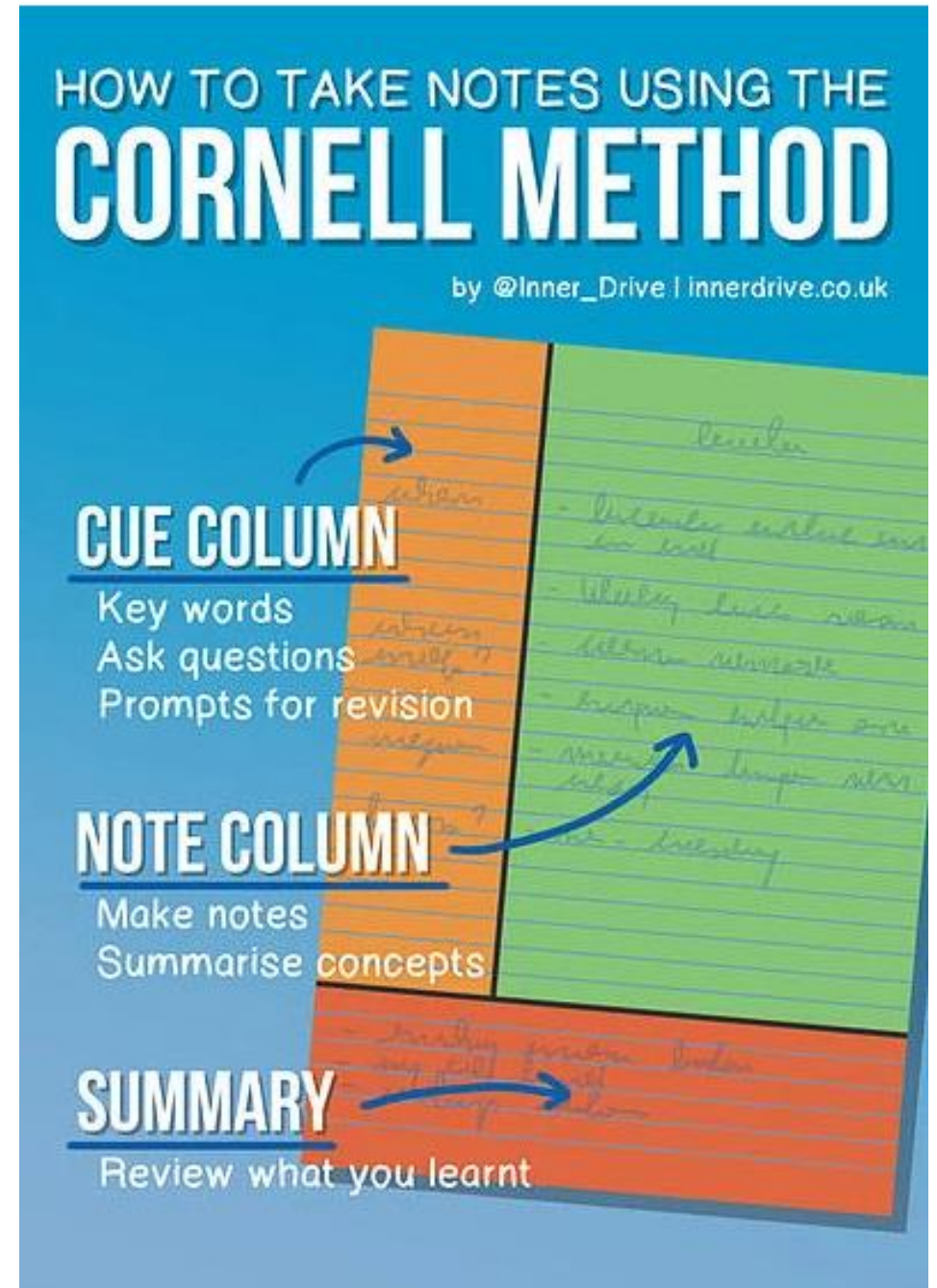
Revising characters and themes

The questions for Literature are generally theme or character based.

You may want to try:
Cornell note-taking
Mind Maps
Flashcards



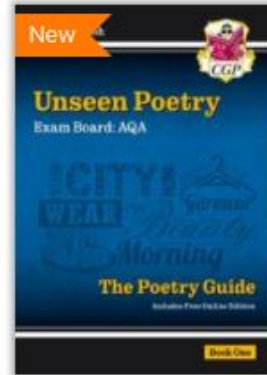
1. Split your page into 3 sections
2. Take detailed but concise note about character of theme in the note column
3. Write down questions in the cue column
4. After a few days, cover up your note column and see if you can use the cue column questions to write a summary
5. Repeat the process regularly



Revision Guides CPG and Snap



[Quick View](#)



[Quick View](#)



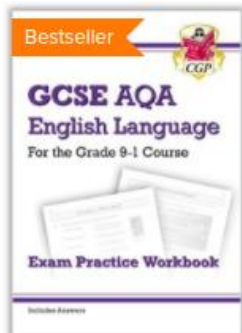
[Quick View](#)

New GCSE English Text Guide - An Inspector Calls includes Online Edition & Quizzes



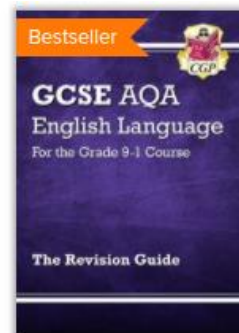
[Quick View](#)

New GCSE English Shakespeare Text Guide - Macbeth includes Online Edition & Quizzes



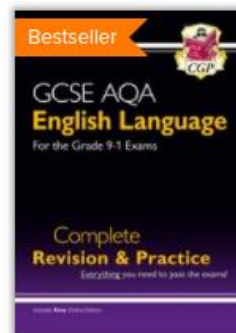
[Quick View](#)

GCSE English Language AQA Exam Practice Workbook - for the Grade 9-1 Course (includes Answers)



[Quick View](#)

GCSE English Language AQA Revision Guide - for the Grade 9-1 Course
ENAR41



[Quick View](#)

GCSE English Language AQA Complete Revision & Practice - Grade 9-1 Course (with Online Edition)

