



Welcome!
September 2021

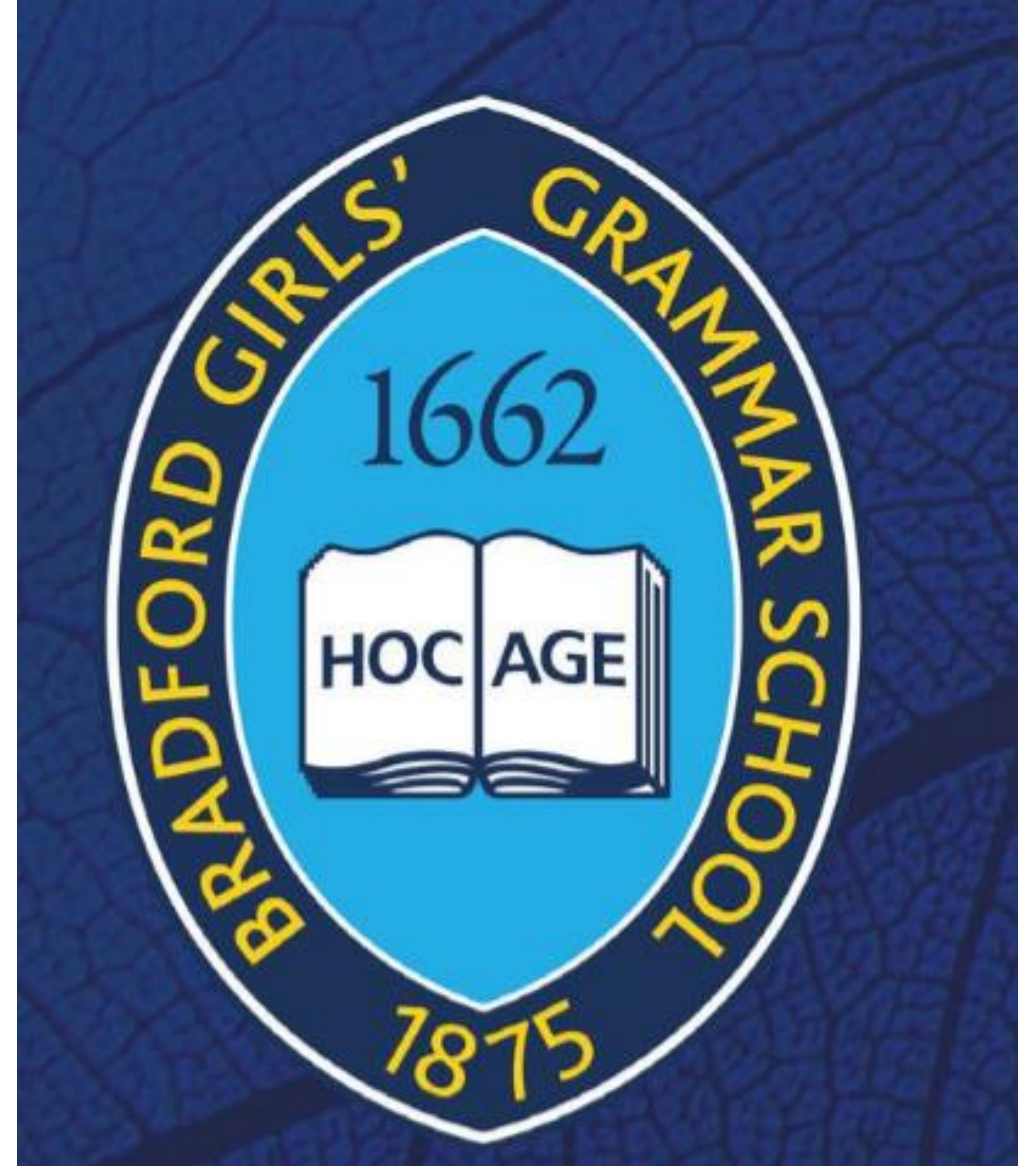
WELCOME TO

BRADFORD GIRLS' GRAMMAR SCHOOL

Witamy Vitajte Bienvenue Bienvenidas

خوش آمدید أهلا بك 英语 ਸਵਾਗਤ ਹੈ

ברוך הבא স্বাগত છે به را غلاست



Aims of this session

- Welcome parents back to BGGS!
- Introduce staff and explain their role in supporting your child
- Share our school values and priorities
- Outline opportunities for parent involvement
- Share Year Group key information

Principal

Mrs Martin



Vice Principal

Mrs Howarth



Senior Leader Link Y7

Mrs Shields



Y7 Year Leader

Miss Dickinson



Senior Leader Safeguarding

Miss Harris



Senior Leader, Behaviour

Ms Jackson



Senior Leader, Personal Development, Mrs Sutcliffe



Y7 Year Manager

Mrs Hussain



School Motto

ASPIRE

SUCCEED

LEAD

What do you want from your school?



GAIN GREAT RESULTS



BE HAPPY



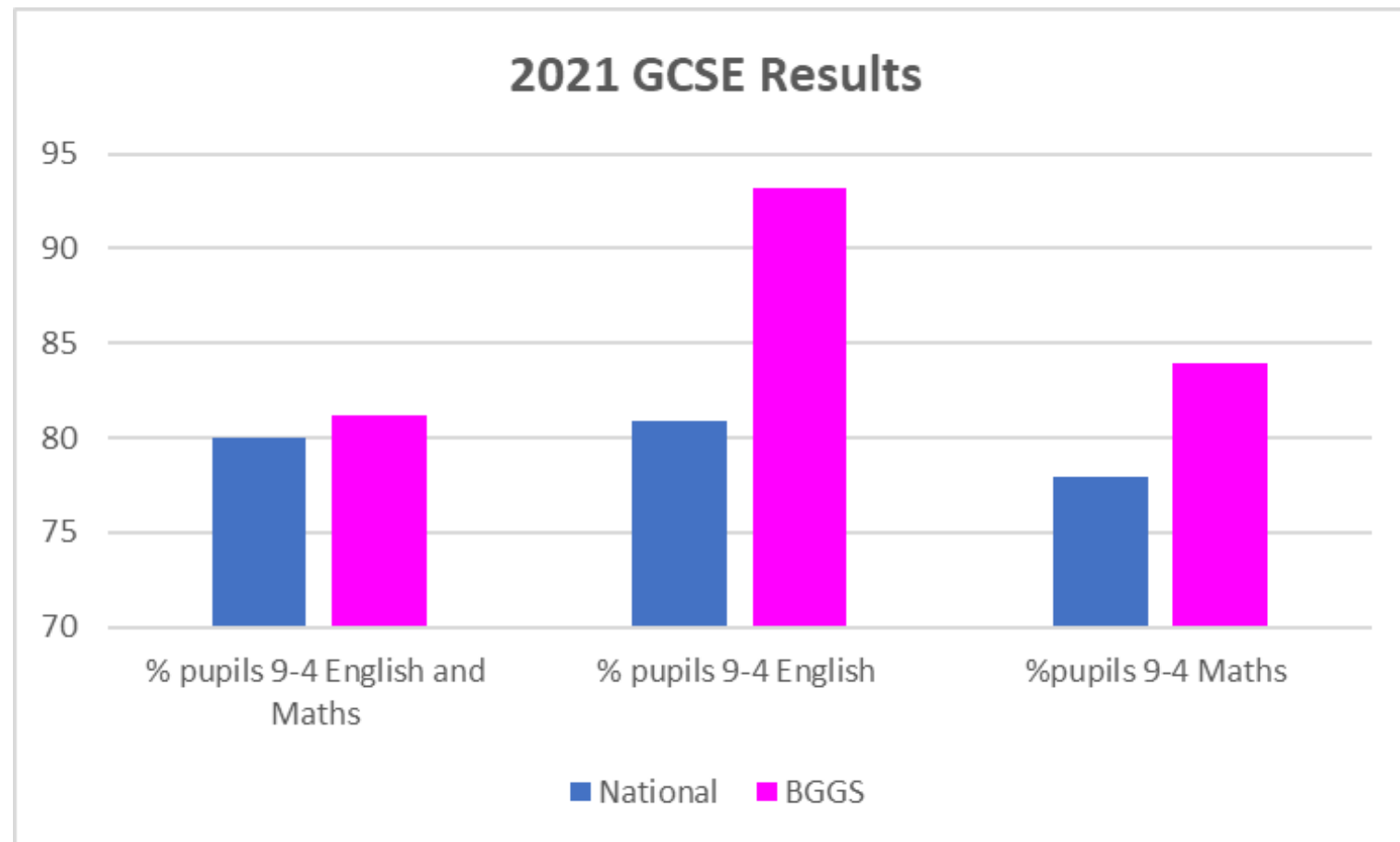
GROW AS CONFIDENT,
KNOWLEDGEABLE,
AND CARING PEOPLE



TO BE SUCCESSFUL IN
YOUR NEXT STEPS

Significantly better
results than other
schools in Bradford,
and in England

Great Results



Great Prospects

- 21 applied to university
- 21 offered a university place.
- 19 gained their first choice
- 11 different courses including
 - 3 Medicine
 - 3 Law
 - 2 Optometry
 - 2 Nursing
 - 2 Teaching
 - 3 Biomedical Science
 - 1 Radiography

Outcomes of our last ever sixth form cohort of 24 students.

The result of a fantastic through-school education

- ✓ Excellent teaching
- ✓ Excellent careers advice
- ✓ Excellent preparation for future life

Strong Values guide our actions



Key Priorities

- High expectations
- High standards
- Excellent teaching, giving high quality feedback
- Developing high standards of literacy
- Broadening experiences through extra-curricular
- Promoting tolerance and respect
- Working in partnership with parents

High Expectations

Students
should **LEAD**
their learning

Listen

During **registration** and **teacher explanation**.
When other students are **feeding back** to the class,
answering a question or **presenting** their work.

Equipment

Planner, Calculator, Pencil case and contents,
subject specific equipment, text books,
exercise/sketch books, homework...
and a **positive attitude**.



Ask

Questions
For **support**
For **extension** activities

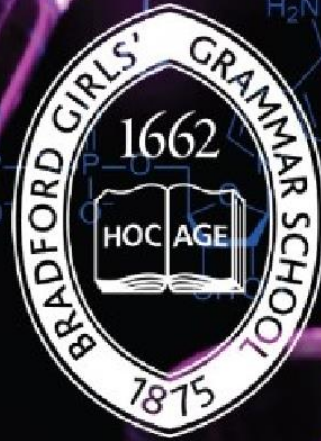
Deliver

High quality, well presented work
During the 15-20 minute period of **independent**
silent, but **supported** **working** in **every lesson**

High Expectations

High Standards of presentation

Periods of silent work in every lesson – students should work hard, build resilience



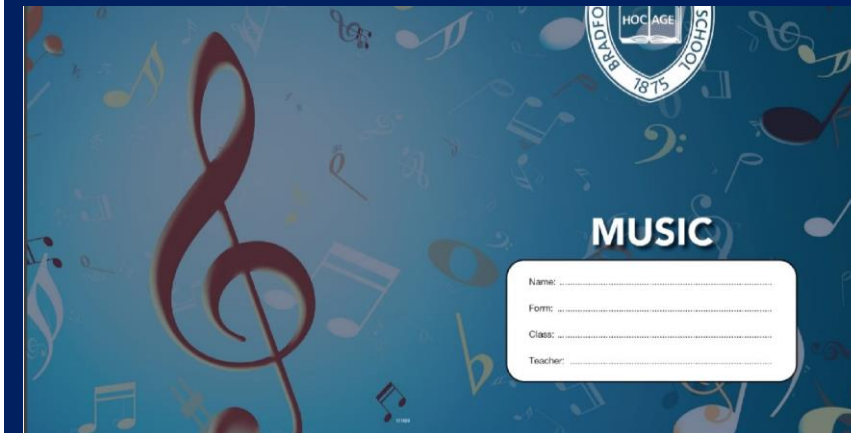
SCIENCE

Name:

Form:

Subject:

Teacher:





ASPIRE • SUCCEED • LEAD

BRADFORD GIRLS' GRAMMAR SCHOOL

Co-educational up to Y1, Girls only Y1–Y6

Marking Codes

Next to work that has been marked by your teacher, you may notice letters, symbols, or different coloured pen. These are the BGGGS Marking Codes. They tell you what you need to do to improve your work.

Use them to help you to decide how you should improve your work during reflection time.

Code	Meaning	Code	Meaning
//	New paragraph	RP	Ruler and pencil for diagrams
Gr	Grammar	WO	Show your working out
O (Circle where it is missing)	Punctuation	U	Include your units
_ (Underline where it is missing)	Capital letter	A	Please use an algebraic method
^	Missing word/symbol/number	RE	You have rounded incorrectly or too early
Pres	Presentation	CC	Check your calculations – your method is correct.
Sp	Check your spelling	S	Simplify your answer
?	Doesn't make sense	EBI	Even better if
RQ	Read the question more carefully	WWW	What went well
Green highlighter or pen	Means great. How can I make sure I do more work like this?	Pink highlighter or pen	Means think. What can I improve?

High Quality Feedback

To help students know how to improve their work

Consistent marking codes used – shown inside every front cover

Support

The Periodic Table of Elements

Group	1	2	3	4	5	6	7	8	9	10	11	12	13	14	15	16	17	18
Period	1	2	3	4	5	6	7	8	9	10	11	12	13	14	15	16	17	18
1	H Hydrogen																	
2	Li Lithium	Be Beryllium																
3	Na Sodium	Mg Magnesium																
4	K Potassium	Ca Calcium	Sc Scandium	Ti Titanium	V Vanadium	Cr Chromium	Mn Manganese	Fe Iron	Co Cobalt	Ni Nickel	Cu Copper	Zn Zinc	Ga Gallium	Ge Germanium	As Arsenic	Se Selenium	Br Bromine	Kr Krypton
5	Rb Rubidium	Sr Strontium	Y Yttrium	Zr Zirconium	Nb Niobium	Mo Molybdenum	Tc Technetium	Ru Ruthenium	Rh Rhodium	Pd Palladium	Ag Silver	Cd Cadmium	In Indium	Sn Tin	Sb Antimony	Te Tellurium	I Iodine	Xe Xenon
6	Cs Cesium	Ba Barium	La Lanthanum	Hf Hafnium	Ta Tantalum	W Tungsten	Re Rhenium	Os Osmium	Ir Iridium	Pt Platinum	Au Gold	Hg Mercury	Tl Thallium	Pb Lead	Bi Bismuth	Po Polonium	At Astatine	Rn Radon
7	Fr Francium	Ra Radium	Ac Actinium	Rf Rutherfordium	Db Dubnium	Sg Seaborgium	Bh Bohrium	Hs Hassium	Mt Meitnerium	Ds Darmstadtium	Rg Roentgenium	Cn Copernicium	Uut Ununtrium	Fl Flerovium	Uup Ununpentium	Lv Livermorium	Uus Ununseptium	Uuo Ununoctium

Leger notes

The names of the notes

Rests

Key signatures

What is the rhythm

Quavers and semiquavers often appear in groups. Each group adds up to one beat.

How much each note is worth

Music signs

150 Commonly Misspelt Words			
lot	definitely	judgement	receive
absence	description	knowledgeable	recommend
acceptable	develop	laboratory	responsibility
accommodate	difference	latter	responsible
accuracy	disappear	leisurely	restaurant
acquaint	disappoint	liaise	rhythm
acquire	disapprove	licence	satellite
adapt	discussion	lonely	secretary
adequately	dividend	maintenance	seize
adolescent	division	manoeuvre	separate
advertise	effect	maybe	signature
affect	embarrassed	meant	sincerely
aggravate	exaggerate	mortgage	skiing
all right	excellent	necessary	souvenir
amateur	expense	nickel	strictly
among	facsimile	ninety	stubbornness
analyse	fascinate	noticeable	succeed
annually	February	nuclear	success
apparent	finally	nuisance	summarised
appearance	financially	occasion	superintendent
argument	forty	occurrence	surprise
athletic	fulfil	occurring	swimming
attendance	government	oppressed	tendency
auxiliary	governor	parallel	therefore
backward	guarantee	particle	thorough
battery	humorous	pastime	through
beginning	illogical	possibly	transferred
beneficiary	imaginary	practically	truly
bureaucracy	immediately	precede	unanimous
calendar	inconvenience	precedent	until
carefully	independent	preference	used to
catalogue	indispensable	privilege	usually
cemetery	inoculate	probably	vacuum
chief	interest	proceed	vertical
commitment	interruption	pronunciation	vitamin
committee	invariably	propaganda	weird
controlled	irresistible	proposal	
criticised	jewellery	questionnaire	

A focus on Literacy

Promoting a love of reading

Developing vocabulary – the academic language of success

Redeveloped libraries and guided reading



Extra-Curricular Opportunities

Lunchtime & after-school

ALL students expected to participate





Promoting Equality & Diversity

Tolerance,
understanding,
respect for all
cultures, faiths,
and beliefs.



Relationships and mutual respect



Parent Partnership

Communication:

❖ **Fridays - Weekly update letters**

❖ **Monday morning – 13th September**

Coffee & a Conversation 8.30am - 9.15am Dining Hall.

Community languages spoken

❖ **Website**

❖ **Walk and Talk rambles**

Curriculum Workshops:

A programme including Maths, Reading etc

PSHE Workshops:

Mental health & wellbeing, drugs, social media, Relationships & Sex Education





Leading Parent Partnership Award Objectives

LPPA

improving
parental
engagement

1

Commitment

The school demonstrates a commitment to work towards achieving the LPPA

2

Effective plans

The school makes and implements effective plans to achieve and maintain the LPPA

3

Welcoming

The school is a welcoming, communicative and friendly place for parents

4

Promoting awareness

The school promotes the awareness and participation of all groups of parents in supporting their children's learning and developing their own learning.

5

Induction

The school provides a good induction for all new parents

6

Guidance and information

The school provides parents with relevant and user-friendly guidance and information to help them support their children's learning

7

Parent-friendly policies

The school produces and implements parent-friendly policies to establish effective home-school links and improve children's attendance, punctuality, progress and positive participation in school

8

Support

The school provides good support for all parents as their children move through or leave the school

9

Future plans

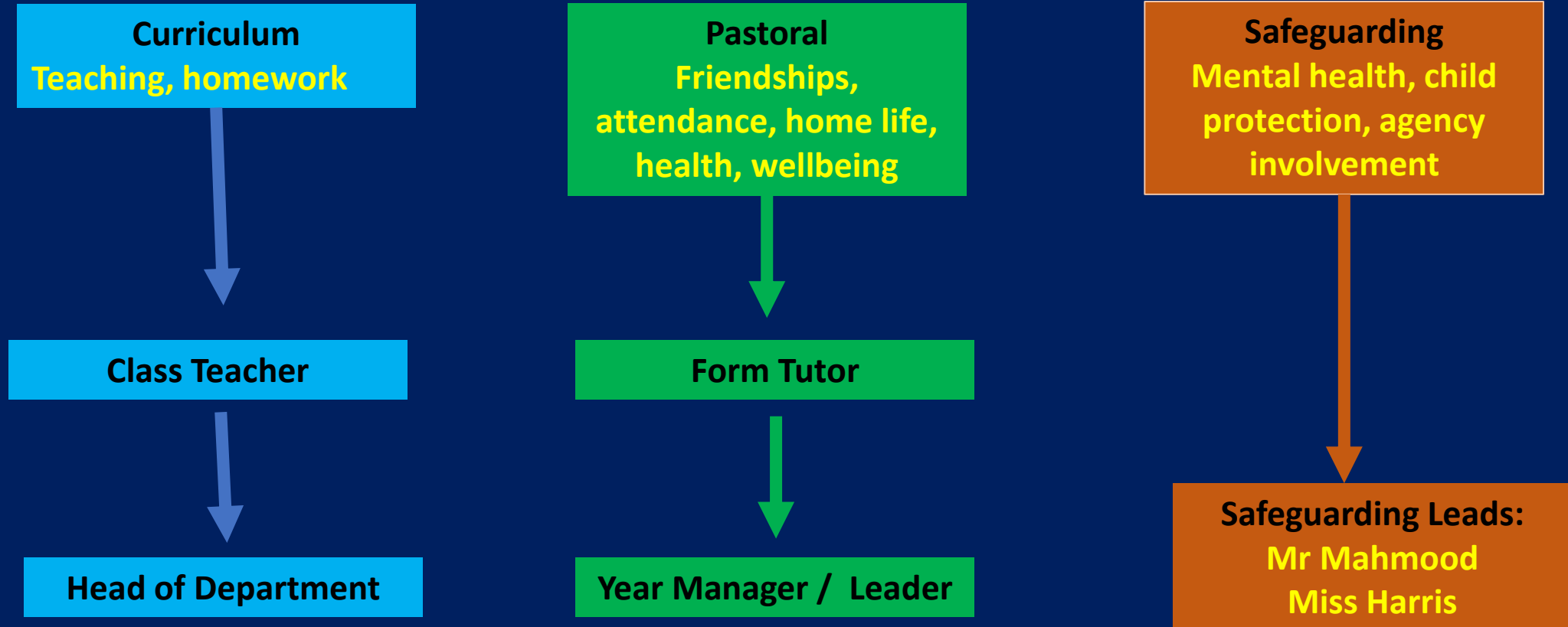
The school summarises its achievements against the LPPA Objectives and outlines its future plans

Click to add text

Opportunity for 2 parents to be part of the working party.

Nominations process to be communicated shortly.

Who to contact



Email: safe@bggs.com



ASPIRE • SUCCEED • LEAD

BRADFORD GIRLS'
GRAMMAR SCHOOL

Co-educational up to 11, Girls only 11-16

Select Language 

IMPORTANT SAFEGUARDING INFORMATION >>>

School portal 

If you have any concerns about your child or another family, or feel you need safeguarding advice, please contact a member of our safeguarding team.

Contact Now >

If you have any concerns about your child or another family, or feel you need safeguarding advice and you want to report something anonymously?

Click here >

Providing an exceptional education rich in learning opportunities in a supportive and nurturing environment

Aspire. Succeed. Lead

CURRICULUM 

**LADY ROYD
PRIMARY**

SENIOR SCHOOL

PARENT INFORMATION

CONTACT US



Personal Development

Vicky Sutcliffe

Senior Leader – Personal Development

**House Meetings and
Competitions**

Form Time

Year group activities

School Council

**Personal
Development**

Assemblies

Rewards

PSHE

Extra Curricular Activities

Form Time and Assemblies

- Programme of activities to support personal development and learning
- Assemblies, organisation, PSHE, House meetings, reading, praise and support
- Assemblies delivered by SLT and Year Leaders linked to School Values and addressing a range of themes

School Council

- Elections held this week
- Three committees
- Regular meetings
- Feedback taken to SLT

House System

- Fortnightly meeting with House members from all year groups
- Builds confidence, cooperation and teamwork
- Competitions throughout the year

Extra-Curricular

- Activities every lunchtime and after school
- Sport, music, artistic, cultural, wellbeing
- Attendance expected and monitored

Rewards

- Achievement points awarded for upholding School Values
- Certificates at significant milestones
- Entries into raffle to win notebooks, stationery sets, vouchers and other prizes

PSHE including SRE

- Half term 1 –
BEING ME IN
MY WORLD

Who am I?

My influences

Peer pressure and belonging

My online identity

What are the consequences of
what I say and do online?

PSHE including SRE

- Other Topics Include:
- Celebrating Difference
- Dreams and Goals
- Healthy Me
- Relationships
- Changing Me

- Find out more:

PSHE Parents Information Session 3.15pm Monday 27th September

Supporting Excellent Behaviour

Corinne Jackson

Senior Leader – Behaviour